

bs-21564R**[Primary Antibody]****Bioss**
ANTIBODIES

www.bioss.com.cn

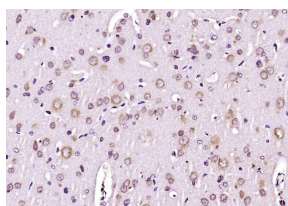
sales@bioss.com.cn

techsupport@bioss.com.cn

400-901-9800

Glutathione Reductase Rabbit pAb**— DATASHEET —**

Host: Rabbit	Isotype: IgG	Applications: IHC-P (1:100-500) IHC-F (1:100-500) IF (1:100-500) Reactivity: Rat (predicted: Mouse) Predicted MW.: 57 kDa Subcellular Location: Secreted
Clonality: Polyclonal		
GeneID: 14782	SWISS: P47791	
Target: Glutathione Reductase		
Immunogen: KLH conjugated synthetic peptide derived from mouse Glutathione Reductase : 361-460/500.		
Purification: affinity purified by Protein A		
Concentration: 1mg/ml		
Storage: 0.01M TBS (pH7.4) with 1% BSA, 0.02% Proclin300 and 50% Glycerol. Shipped at 4°C. Store at -20°C for one year. Avoid repeated freeze/thaw cycles.		
Background: bs-0837P is one synthetic peptide derived from human Glutathione Reductase. Glutathione reductase (GR) is a member of pyridine nucleotide-disulfide oxidoreductases, which includes the closely related enzymes thioredoxin reductase, lipoamide dehydrogenase, trypanothione reductase and mercuric ion reductase. GR is a cytoplasmic flavoenzyme widely distributed in aerobic organisms. The dimeric protein is composed of two identical subunits, each containing 1 FAD and 1 redox-active disulfide/dithiol as components of the catalytic apparatus. It plays a role in maintaining glutathione (GSH) in its reduced form by catalyzing the reduction of glutathione disulfide (GSSG): $GSSG + NADPH + H^+ \rightarrow 2GSH + NADP^+$. In most eukaryotic cells, GR maintains the ratio of [GSH]/[GSSG], and participates in several vital functions such as the detoxification of reactive oxygen species as well as protein and DNA biosynthesis.		

— VALIDATION IMAGES —

Paraformaldehyde-fixed, paraffin embedded (rat brain); Antigen retrieval by boiling in sodium citrate buffer (pH6.0) for 15min; Block endogenous peroxidase by 3% hydrogen peroxide for 20 minutes; Blocking buffer (normal goat serum) at 37°C for 30min; Antibody incubation with (Glutathione Reductase) Polyclonal Antibody, Unconjugated (bs-21564R) at 1:200 overnight at 4°C, followed by operating according to SP Kit(Rabbit) (sp-0023) instructions and DAB staining.