

bs-8066R**[Primary Antibody]****SRRM1 Rabbit pAb****Bioss**
ANTIBODIES

www.bioss.com.cn

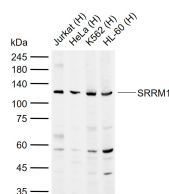
sales@bioss.com.cn

techsupport@bioss.com.cn

400-901-9800

— DATASHEET —

Host: Rabbit Clonality: Polyclonal GeneID: 10250 Target: SRRM1 Immunogen: KLH conjugated synthetic peptide derived from human SRRM1: 21-120/904. Purification: affinity purified by Protein A Concentration: 1mg/ml Storage: 0.01M TBS (pH7.4) with 1% BSA, 0.02% Proclin300 and 50% Glycerol. Shipped at 4°C. Store at -20°C for one year. Avoid repeated freeze/thaw cycles. Background: Part of pre- and post-splicing multiprotein mRNP complexes. Involved in numerous pre-mRNA processing events. Promotes constitutive and exonic splicing enhancer (ESE)-dependent splicing activation by bridging together sequence-specific (SR family proteins, SFRS4, SFRS5 and TRA2B/SFRS10) and basal snRNP (SNRP70 and SNRPA1) factors of the spliceosome. Stimulates mRNA 3'-end cleavage independently of the formation of an exon junction complex. Binds both pre-mRNA and spliced mRNA 20-25 nt upstream of exon-exon junctions. Binds RNA and DNA with low sequence specificity and has similar preference for either double- or single-stranded nucleic acid substrates.	Isotype: IgG SWISS: Q8IYB3	Applications: WB (1:500-2000) Reactivity: Human (predicted: Mouse, Rat, Rabbit, Pig, Cow, Chicken, Dog) Predicted MW.: 102 kDa Subcellular Location: Nucleus
--	---	---

— VALIDATION IMAGES —

Sample: Lane 1: Human Jurkat cell lysates Lane 2: Human HeLa cell lysates Lane 3: Human K562 cell lysates Lane 4: Human HL-60 cell lysates
Primary: Anti-SRRM1 (bs-8066R) at 1/1000 dilution Secondary: IRDye800CW Goat Anti-Rabbit IgG at 1/20000 dilution Predicted band size: 102 kDa Observed band size: 120 kDa