

bs-7889R**[Primary Antibody]****CCNYL1 Rabbit pAb****BioSS**
ANTIBODIES

www.bioss.com.cn

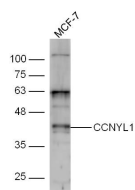
sales@bioss.com.cn

techsupport@bioss.com.cn

400-901-9800

— DATASHEET —

Host: Rabbit	Isotype: IgG	Applications: WB (1:500-2000)
Clonality: Polyclonal		
GeneID: 57018	SWISS: Q8N7R7	
Target: CCNYL1		
Immunogen: KLH conjugated synthetic peptide derived from human CCNYL1: 68-150/359.		
Purification: affinity purified by Protein A		
Concentration: 1mg/ml		
Storage: 0.01M TBS (pH7.4) with 1% BSA, 0.02% Proclin300 and 50% Glycerol. Shipped at 4°C. Store at -20°C for one year. Avoid repeated freeze/thaw cycles.		Reactivity: Human (predicted: Mouse, Rat, Rabbit, Pig, Sheep, Cow, Chicken, Dog)
Background: CCNYL1 belongs to the cyclin family, Cyclin Y subfamily and contains 1 cyclin N terminal domain. The specific function of CCNYL1 is not yet known.		Predicted MW.: 41 kDa
		Subcellular Location: Secreted ,Extracellular matrix ,Cell membrane ,Cytoplasm ,Nucleus

— VALIDATION IMAGES —

Sample: MCF-7 Cell (Human) Lysate at 30 ug
Primary: Anti-CCNYL1 (bs-7889R) at 1/300
dilution Secondary: IRDye800CW Goat Anti-Rabbit IgG at 1/20000 dilution Predicted band size: 41 kD Observed band size: 41 kD

— SELECTED CITATIONS —

- **[IF=4.556]** Xiaoning Zhang. et al. Cabs1 Maintains Structural Integrity of Mouse Sperm Flagella during Epididymal Transit of Sperm. Int J Mol Sci. 2021 Jan;22(2):652 WB,IF ;Mouse. 33440775