

**bs-20294R****[ Primary Antibody ]****LDHB Rabbit pAb****Bioss**  
**ANTIBODIES**

www.bioss.com.cn

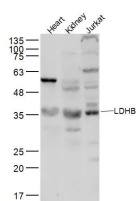
sales@bioss.com.cn

techsupport@bioss.com.cn

400-901-9800

**— DATASHEET —**

<b>Host:</b> Rabbit <b>Clonality:</b> Polyclonal <b>GeneID:</b> 3945 <b>Target:</b> LDHB <b>Immunogen:</b> KLH conjugated synthetic peptide derived from human LDHB: 181-250/334. <b>Purification:</b> affinity purified by Protein A <b>Concentration:</b> 1mg/ml <b>Storage:</b> 0.01M TBS (pH7.4) with 1% BSA, 0.02% Proclin300 and 50% Glycerol. Shipped at 4°C. Store at -20°C for one year. Avoid repeated freeze/thaw cycles. <b>Background:</b> This gene encodes the B subunit of lactate dehydrogenase enzyme, which catalyzes the interconversion of pyruvate and lactate with concomitant interconversion of NADH and NAD <sup>+</sup> in a post-glycolysis process. Recent studies have shown that two protein isoforms are produced from the same mRNA by use of alternative in-frame translation termination codons via a stop codon readthrough mechanism, and that these C-terminally distinct isoforms have different subcellular localization. Alternatively spliced transcript variants have also been found for this gene. Mutations in this gene are associated with lactate dehydrogenase B deficiency. Pseudogenes have been identified on chromosomes X, 5 and 13. [provided by RefSeq, Oct 2015]	<b>Isotype:</b> IgG <b>SWISS:</b> P07195	<b>Applications:</b> WB (1:500-2000) <b>Reactivity:</b> Human, Mouse (predicted: Rat, Rabbit, Pig, Cow) <b>Predicted MW.:</b> 37 kDa <b>Subcellular Location:</b> Cytoplasm
---	---	---

**— VALIDATION IMAGES —**

Sample: Heart (Mouse) Lysate at 40 ug Kidney (Mouse) Lysate at 40 ug Jurkat (Human) Lysate at 40 ug  
 Primary: Anti-LDHB (bs-20294R) at 1/300 dilution Secondary: IRDye800CW Goat Anti-Rabbit IgG at 1/20000 dilution Predicted band size: 37 kD Observed band size: 37 kD

**— SELECTED CITATIONS —**

- **[IF=4.486]** Du Y et al. ATPR triggers acute myeloid leukaemia cells differentiation and cycle arrest via the RARα/LDHB/ERK - glycolysis signalling axis. J Cell Mol Med. 2020 Jun; 24(12): 6952–6965. IHC ;mouse. 32391634