

**bs-23063R**

**[ Primary Antibody ]**

**Bioss**  
ANTIBODIES

www.bioss.com.cn

sales@bioss.com.cn

techsupport@bioss.com.cn

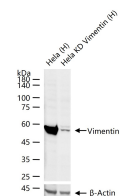
400-901-9800

## Vimentin Rabbit pAb

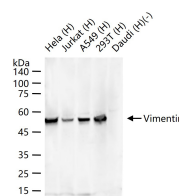
### DATASHEET

<b>Host:</b> Rabbit	<b>Isotype:</b> IgG	<b>Applications:</b> WB (1:500-2000) IHC-P (1:100-500) IHC-F (1:100-500) IF (1:100-500) ICC/IF (1:100) ELISA (1:5000-10000)
<b>Clonality:</b> Polyclonal		
<b>GeneID:</b> 7431	<b>SWISS:</b> P08670	
<b>Target:</b> Vimentin		
<b>Immunogen:</b> Recombinant human Vimentin: 1-466/466.		
<b>Purification:</b> affinity purified by Protein A		
<b>Concentration:</b> 1mg/ml		<b>Reactivity:</b> Human
<b>Storage:</b> 0.01M TBS (pH7.4) with 1% BSA, 0.02% Proclin300 and 50% Glycerol. Shipped at 4°C. Store at -20°C for one year. Avoid repeated freeze/thaw cycles.		<b>Predicted MW.:</b> 53 kDa
<b>Background:</b> This gene encodes a member of the intermediate filament family. Intermediate filaments, along with microtubules and actin microfilaments, make up the cytoskeleton. The protein encoded by this gene is responsible for maintaining cell shape, integrity of the cytoplasm, and stabilizing cytoskeletal interactions. It is also involved in the immune response, and controls the transport of low-density lipoprotein (LDL)-derived cholesterol from a lysosome to the site of esterification. It functions as an organizer of a number of critical proteins involved in attachment, migration, and cell signaling. Mutations in this gene causes a dominant, pulverulent cataract.[provided by RefSeq, Jun 2009]		<b>Subcellular Location:</b> Cytoplasm

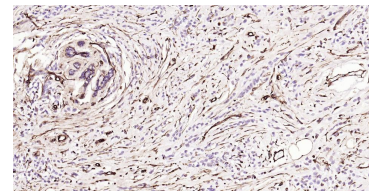
### VALIDATION IMAGES



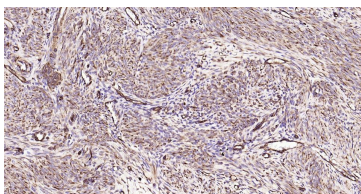
25 ug total protein per lane of various lysates (see on figure) probed with Vimentin polyclonal antibody, unconjugated (bs-23063R) at 1:1000 dilution and 4°C overnight incubation. Followed by conjugated secondary antibody incubation at r.t. for 60 min.



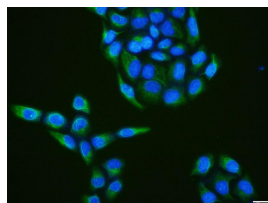
25 ug total protein per lane of various lysates (see on figure) probed with Vimentin polyclonal antibody, unconjugated (bs-23063R) at 1:1000 dilution and 4°C overnight incubation. Followed by conjugated secondary antibody incubation at r.t. for 60 min.



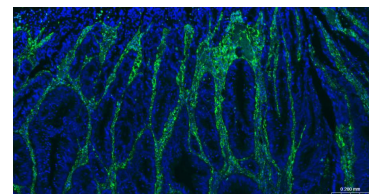
Paraformaldehyde-fixed, paraffin embedded Human Breast Cancer; Antigen retrieval by boiling in sodium citrate buffer (pH6.0) for 15 min; Antibody incubation with Vimentin Polyclonal Antibody, Unconjugated (bs-23063R) at 1:200 overnight at 4°C, followed by conjugation to the SP Kit (Rabbit, SP-0023) and DAB (C-0010) staining.



Paraformaldehyde-fixed, paraffin embedded Human Uterus; Antigen retrieval by boiling in sodium citrate buffer (pH6.0) for 15 min; Antibody incubation with Vimentin Polyclonal Antibody, Unconjugated (bs-23063R) at 1:200 overnight at 4°C, followed by conjugation to the SP Kit (Rabbit, SP-0023) and DAB (C-0010)



Hela cell; 4% Paraformaldehyde-fixed; Triton X-100 at room temperature for 20 min; Blocking buffer (normal goat serum, C-0005) at 37°C for 20 min; Antibody incubation with (Vimentin) polyclonal Antibody, Unconjugated (bs-23063R) 1:100, 90 minutes at 37°C; followed by a conjugated Goat Anti-Rabbit IgG antibody at



Paraformaldehyde-fixed, paraffin embedded Human Colon Cancer; Antigen retrieval by boiling in sodium citrate buffer (pH6.0) for 15 min; Antibody incubation with Vimentin Polyclonal Antibody, Unconjugated (bs-23063R) at 1:200 overnight at 4°C. Followed by conjugated Goat Anti-Rabbit IgG antibody

Important Note: This product as supplied is intended for research use only, not for use in human, therapeutic or diagnostic applications.

staining.

37°C for 90 minutes, DAPI (blue, C02-04002) was used to stain the cell nuclei.

(green, bs-0295G-BF488), DAPI (blue, C02-04002) was used to stain the cell nuclei.

## — SELECTED CITATIONS —

---

- **[IF=7.419]** Honghua Yue. et al. Colchicine: Emerging therapeutic effects on atrial fibrillation by alleviating myocardial fibrosis in a rat model. BIOMED PHARMACOTHER. 2022 Oct;154:113573 IF ;Rat. 35987161
- **[IF=5.959]** Hou L et al. Nontoxic concentration of ochratoxin A decreases the dosage of cyclosporine A to induce chronic nephropathy model via autophagy mediated by toll-like receptor 4. Cell Death Dis. 2020 Feb 27;11(2):153. IF ;human. 32108135
- **[IF=5.895]** Heng Du. et al. Nontoxic Concentration of Ochratoxin A Aggravates Renal Fibrosis Induced by Adriamycin/Cyclosporine A Nephropathy via TGF- $\beta$ 1/SMAD2/3. J AGR FOOD CHEM. 2022;XXXX(XXX):XXX-XXX WB ;Human. 36278938
- **[IF=5.4]** Xiaobo Xu. et al. CD74-ROS1 L2026M mutant enhances autophagy through the MEK/ERK pathway to promote invasion, metastasis and crizotinib resistance in non-small cell lung cancer cells. FEBS J. 2023 Dec;: WB ;Human. 38148635
- **[IF=5.314]** Jiajia Xu. et al. Therapeutic function of a novel rat induced pluripotent stem cell line in a 6-OHDA-induced rat model of Parkinson's disease. INT J MOL MED. 2022 Dec;50(6):1-13 IF ;Rat. 36300203