

NUMB Rabbit pAb

Catalog Number: bs-3510R

Target Protein: NUMB

Concentration: 1mg/ml

Form: Liquid

Host: Rabbit

Clonality: Polyclonal

Isotype: IgG

Applications: WB (1:500-2000)

Reactivity: Human, Mouse, Rat

Predicted MW: 70 kDa

Entrez Gene: 8650

Swiss Prot: P49757

Source: KLH conjugated synthetic peptide derived from human NUMB: 151-250/651.

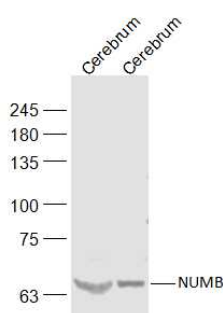
Purification: affinity purified by Protein A

Storage: 0.01M TBS (pH7.4) with 1% BSA, 0.02% Proclin300 and 50% Glycerol.

Shipped at 4°C. Store at -20°C for one year. Avoid repeated freeze/thaw cycles.

Background: The protein encoded by this gene plays a role in the determination of cell fates during development. The encoded protein, whose degradation is induced in a proteasome-dependent manner by MDM2, is a membrane-bound protein that has been shown to associate with EPS15, LNX1, and NOTCH1. Four transcript variants encoding different isoforms have been found for this gene. [provided by RefSeq].

VALIDATION IMAGES



Sample: Cerebrum (Mouse) Lysate at 40 ug Cerebrum (Rat) Lysate at 40 ug Primary: Anti-NUMB (bs-3510R) at 1/500 dilution Secondary: IRDye800CW Goat Anti-Rabbit IgG at 1/20000 dilution Predicted band size: 70 kD Observed band size: 70 kD