

**bs-23062R****[ Primary Antibody ]****BioSS**  
**ANTIBODIES**

www.bioss.com.cn

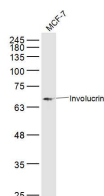
sales@bioss.com.cn

techsupport@bioss.com.cn

400-901-9800

**Involucrin Rabbit pAb****— DATASHEET —**

<b>Host:</b> Rabbit	<b>Isotype:</b> IgG	<b>Applications:</b> WB (1:500-2000)
<b>Clonality:</b> Polyclonal		<b>Reactivity:</b> Human (predicted: Mouse, Rat)
<b>GeneID:</b> 16447	<b>SWISS:</b> P48997	
<b>Target:</b> Involucrin		<b>Predicted MW.:</b> 64 kDa
<b>Immunogen:</b> KLH conjugated synthetic peptide derived from mouse Involucrin: 21-120/467.		<b>Subcellular Location:</b> Cytoplasm
<b>Purification:</b> affinity purified by Protein A		
<b>Concentration:</b> 1mg/ml		
<b>Storage:</b> 0.01M TBS (pH7.4) with 1% BSA, 0.02% Proclin300 and 50% Glycerol. Shipped at 4°C. Store at -20°C for one year. Avoid repeated freeze/thaw cycles.		
<b>Background:</b> Involucrin, a component of the keratinocyte crosslinked envelope, is found in the cytoplasm and crosslinked to membrane proteins by transglutaminase. This gene is mapped to 1q21, among calpactin I light chain, trichohyalin, profillaggrin, loricrin, and calcyclin. [provided by RefSeq, Jul 2008].		

**— VALIDATION IMAGES —**

Sample: MCM-7(Human) Cell Lysate at 30 ug  
Primary: Anti-Involucrin (bs-23062R) at 1/300  
dilution Secondary: IRDye800CW Goat Anti-Rabbit IgG at 1/20000 dilution Predicted band size: 64 kD Observed band size: 64 kD

**— SELECTED CITATIONS —**

- **[IF=4.6]** Xue-ting Hu. et al. The GRHL3-regulated long non-coding RNA Inc-DC modulates keratinocytes differentiation by interacting with IGF2BP2 and up-regulating ZNF750. J DERMATOL SCI. 2024 Feb;; WB,IF ;Human. 38383230