
CD27 Rabbit pAb

Catalog Number: bs-23615R

Target Protein: CD27

Concentration: 1mg/ml

Form: Liquid

Host: Rabbit

Clonality: Polyclonal

Isotype: IgG

Applications: WB (1:500-2000)

Reactivity: Human (predicted:Mouse)

Predicted MW: 27 kDa

Entrez Gene: 939

Swiss Prot: P26842

Source: KLH conjugated synthetic peptide derived from human CD27: 101-200/250.

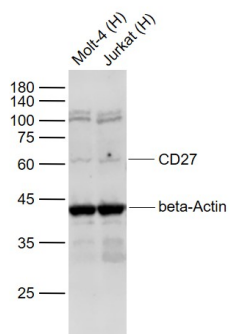
Purification: affinity purified by Protein A

Storage: 0.01M TBS (pH7.4) with 1% BSA, 0.02% Proclin300 and 50% Glycerol.

Shipped at 4°C. Store at -20°C for one year. Avoid repeated freeze/thaw cycles.

Background: The protein encoded by this gene is a member of the TNF-receptor superfamily. This receptor is required for generation and long-term maintenance of T cell immunity. It binds to ligand CD70, and plays a key role in regulating B-cell activation and immunoglobulin synthesis. This receptor transduces signals that lead to the activation of NF-kappaB and MAPK8/JNK. Adaptor proteins TRAF2 and TRAF5 have been shown to mediate the signaling process of this receptor. CD27-binding protein (SIVA), a proapoptotic protein, can bind to this receptor and is thought to play an important role in the apoptosis induced by this receptor. [provided by RefSeq, Jul 2008]

VALIDATION IMAGES



Sample: Lane 1: Molt-4 (Human) Cell Lysate at 30 ug Lane 2: Jurkat (Human) Cell Lysate at 30 ug Primary: Anti-CD27 (bs-23615R) at 1/1000 dilution Anti-beta-Actin (bs-0061R) at 1/2000 dilution Secondary: IRDye800CW Goat Anti-Rabbit IgG at 1/20000 dilution Predicted band size: 50-55 kD Observed band size: 60 kD