

bs-19752R

[Primary Antibody]

SH3BP5 Rabbit pAb

Bioss
ANTIBODIES

www.bioss.com.cn

sales@bioss.com.cn

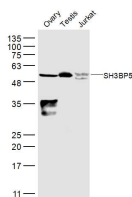
techsupport@bioss.com.cn

400-901-9800

— DATASHEET —

Host: Rabbit	Isotype: IgG	Applications: WB (1:500-2000)
Clonality: Polyclonal		
GeneID: 9467	SWISS: O60239	
Target: SH3BP5		
Immunogen: KLH conjugated synthetic peptide derived from human SH3BP5: 1-100/455.		
Purification: affinity purified by Protein A		Reactivity: Human, Mouse (predicted: Rat, Rabbit, Pig, Cow, Zebrafish, Chicken, Dog, Horse)
Concentration: 1mg/ml		
Storage: 0.01M TBS (pH7.4) with 1% BSA, 0.02% Proclin300 and 50% Glycerol. Shipped at 4°C. Store at -20°C for one year. Avoid repeated freeze/thaw cycles.		
Background: Inhibits the auto- and transphosphorylation activity of BTK. Plays a negative regulatory role in BTK-related cytoplasmic signaling in B-cells. May be involved in BCR-induced apoptotic cell death.		
		Predicted MW.: 50 kDa
		Subcellular Location: Cytoplasm

— VALIDATION IMAGES —



Sample: Ovary (Mouse) Lysate at 40 ug Testis (Mouse) Lysate at 40 ug Jurkat (Human) Cell Lysate at 30 ug Primary: Anti-SH3BP5 (bs-19752R) at 1/300 dilution Secondary: IRDye800CW Goat Anti-Rabbit IgG at 1/20000 dilution Predicted band size: 50 kD Observed band size: 50 kD