

bs-18663R**[Primary Antibody]****MAP3K13/LZK Rabbit pAb****BioSS**
ANTIBODIES

www.bioss.com.cn

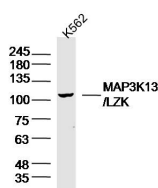
sales@bioss.com.cn

techsupport@bioss.com.cn

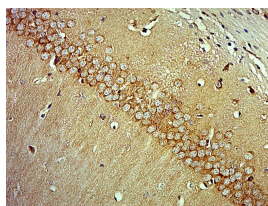
400-901-9800

— DATASHEET —

Host: Rabbit	Isotype: IgG	Applications: WB (1:500-2000) IHC-P (1:100-500) IHC-F (1:100-500) IF (1:100-500) Reactivity: Human, Mouse (predicted: Cow, Orangutan) Predicted MW.: 108 kDa Subcellular Location: Cell membrane ,Cytoplasm
Clonality: Polyclonal		
GeneID: 9175	SWISS: O43283	
Target: MAP3K13/LZK		
Immunogen: KLH conjugated synthetic peptide derived from human MAP3K13/LZK: 801-900/966.		
Purification: affinity purified by Protein A		
Concentration: 1mg/ml		
Storage: 0.01M TBS (pH7.4) with 1% BSA, 0.02% Proclin300 and 50% Glycerol. Shipped at 4°C. Store at -20°C for one year. Avoid repeated freeze/thaw cycles.		
Background: The protein encoded by this gene is a member of serine/threonine protein kinase family. This kinase contains a dual leucine-zipper motif, and has been shown to form dimers/oligomers through its leucine-zipper motif. This kinase can phosphorylate and activate MAPK8/JNK, MAP2K7/MKK7, which suggests a role in the JNK signaling pathway. [provided by RefSeq, Jul 2008]		

— VALIDATION IMAGES —

Sample: K562 Cell (Human) Lysate at 40 ug
Primary: Anti-MAP3K13/LZK (bs-18663R) at 1/300
dilution Secondary: IRDye800CW Goat Anti-
Rabbit IgG at 1/20000 dilution Predicted band
size: 108 kD Observed band size: 108 kD



Paraformaldehyde-fixed, paraffin embedded
(Mouse brain); Antigen retrieval by boiling in
sodium citrate buffer (pH6.0) for 15min; Block
endogenous peroxidase by 3% hydrogen
peroxide for 20 minutes; Blocking buffer (normal
goat serum) at 37°C for 30min; Antibody
incubation with (MAP3K13) Polyclonal Antibody,
Unconjugated (bs-18663R) at 1:500 overnight at
4°C, followed by a conjugated secondary
(sp-0023) for 20 minutes and DAB staining.