

bs-20143R**[Primary Antibody]****Cytokeratin 3 Rabbit pAb****Bioss**
ANTIBODIES

www.bioss.com.cn

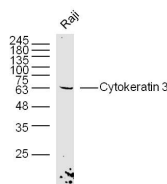
sales@bioss.com.cn

techsupport@bioss.com.cn

400-901-9800

— DATASHEET —

Host: Rabbit	Isotype: IgG	Applications: WB (1:500-2000)
Clonality: Polyclonal		Reactivity: Human (predicted: Rat, Rabbit)
GeneID: 3850	SWISS: P12035	
Target: Cytokeratin 3		Predicted MW.: 64 kDa
Immunogen: KLH conjugated synthetic peptide derived from human Cytokeratin 3: 331-430/628.		Subcellular Location: Extracellular matrix
Purification: affinity purified by Protein A		Location: Cytoplasm
Concentration: 1mg/ml		
Storage: Preservative: 0.02% Proclin300, Constituents: 1% BSA, 0.01M PBS, pH7.4. Shipped at 4°C. Store at -20°C for one year. Avoid repeated freeze/thaw cycles.		
Background: The protein encoded by this gene is a member of the keratin gene family. The type II cytokeratins consist of basic or neutral proteins which are arranged in pairs of heterotypic keratin chains coexpressed during differentiation of simple and stratified epithelial tissues. This type II cytokeratin is specifically expressed in the corneal epithelium with family member KRT12 and mutations in these genes have been associated with Meesmann's Corneal Dystrophy. The type II cytokeratins are clustered in a region of chromosome 12q12-q13. [provided by RefSeq, Jul 2008]		

— VALIDATION IMAGES —

Sample: Raji(human)cell Lysate at 40 ug Primary:
Anti-Cytokeratin 3 (bs-20143R) at 1/300 dilution
Secondary: IRDye800CW Goat Anti-Rabbit IgG at
1/20000 dilution Predicted band size: 64 kD
Observed band size: 64 kD