

bs-18451R**[Primary Antibody]****BioSS**
ANTIBODIES

www.bioss.com.cn

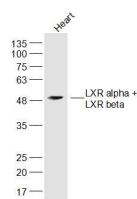
sales@bioss.com.cn

techsupport@bioss.com.cn

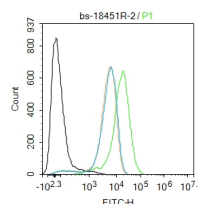
400-901-9800

LXR alpha + LXR beta Rabbit pAb**— DATASHEET —**

Host: Rabbit	Isotype: IgG
Clonality: Polyclonal	
GeneID: 10062	SWISS: Q13133
Target: LXR alpha + LXR beta	
Immunogen: KLH conjugated synthetic peptide derived from human LXR alpha: 51-150/447.	
Purification: affinity purified by Protein A	
Concentration: 1mg/ml	
Storage: 0.01M TBS (pH7.4) with 1% BSA, 0.02% Proclin300 and 50% Glycerol. Shipped at 4°C. Store at -20°C for one year. Avoid repeated freeze/thaw cycles.	
Background: Peroxisome proliferators include hypolipidemic drugs, herbicides, leukotriene antagonists, and plasticizers; this term arises because they induce an increase in the size and number of peroxisomes. Peroxisomes are subcellular organelles found in plants and animals that contain enzymes for respiration and for cholesterol and lipid metabolism. The action of peroxisome proliferators is thought to be mediated via specific receptors, called PPARs, which belong to the steroid hormone receptor superfamily. PPARs affect the expression of target genes involved in cell proliferation, cell differentiation and in immune and inflammation responses. Three closely related subtypes (alpha, beta/delta, and gamma) have been identified. This gene encodes the subtype PPAR-alpha, which is a nuclear transcription factor. Multiple alternatively spliced transcript variants have been described for this gene, although the full-length nature of only two has been determined. [provided by RefSeq, Jul 2008].	

Applications: **WB** (1:500-2000)
Flow-Cyt (2ug/Test)**Reactivity:** Human, Mouse
(predicted: Rat, Rabbit, Pig,
Cow, Chicken, Dog, Horse,
Xenopus laevis)**Predicted
MW.:** 51 kDa**Subcellular
Location:** Nucleus**— VALIDATION IMAGES —**

Sample: Heart (Mouse) Lysate at 40 ug Primary:
Anti-LXR alpha + LXR beta (bs-18451R) at 1/300
dilution Secondary: IRDye800CW Goat Anti-
Rabbit IgG at 1/20000 dilution Predicted band
size: 51 kD Observed band size: 51 kD



Blank control: THP-1. Primary Antibody (green line): Rabbit Anti-LXR alpha + LXR beta antibody (bs-18451R) Dilution: 2µg /10⁶ cells; Isotype Control Antibody (orange line): Rabbit IgG. Secondary Antibody : Goat anti-rabbit IgG-FITC Dilution: 1µg /test. Protocol The cells were fixed with 4% PFA (10min at room temperature) and then permeabilized with 90% ice-cold methanol for 20 min at -20°C. The cells were then incubated in 5% BSA to block non-specific protein-protein interactions for 30 min at room temperature. Cells stained with Primary Antibody for 30 min at room temperature. The secondary antibody used for 40 min at room temperature. Acquisition of 20,000 events was performed.

— SELECTED CITATIONS —

- **[IF=5.2]** Lianjie Hou. et al. IGFBPL1 inhibits macrophage lipid accumulation by enhancing the activation of IGR1R/LXR α /ABCG1 pathway. AGING-US. 2023 Dec 31; 15(24): 14791–14802 WB ;Human. 38157252
- **[IF=4.9]** Xiangyu Lu. et al. Exosomes Derived from Adipose Mesenchymal Stem Cells Ameliorate Lipid Metabolism Disturbances Following Liver Ischemia-Reperfusion Injury in Miniature Swine. INT J MOL SCI. 2024 Jan;25(23):13069 WB ;Pig. 39684778
- **[IF=4.9]** Xingtong Chen. et al. Animal Model Screening for Hyperlipidemic ICR Mice..INTERNATIONAL JOURNAL OF MOLECULAR SCIENCES.2025 Feb 27;26(5):2142. Western blot ;Human. 40076768
- **[IF=4]** Sun Ruiyue. et al. Fermented Natto powder alleviates obesity by regulating LXR pathway and gut microbiota in obesity rats. J APPL MICROBIOL. 2024 Jan;; WB ;Rat. 38192042
- **[IF=3.7]** Hai Tong. et al. High level 27-HC impairs trophoblast cell invasion and migration via LXR in pre-eclampsia. EXP CELL RES. 2024 Apr;437:113979 IHC,IF,WB ;Human,Mouse. 38462209