

**bs-18446R****[ Primary Antibody ]****LUZP2 Rabbit pAb****BioSS**  
**ANTIBODIES**

www.bioss.com.cn

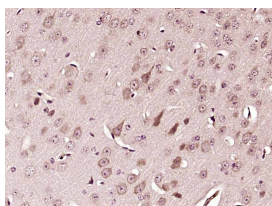
sales@bioss.com.cn

techsupport@bioss.com.cn

400-901-9800

**— DATASHEET —**

<b>Host:</b> Rabbit	<b>Isotype:</b> IgG	<b>Applications:</b> IHC-P (1:100-500) IHC-F (1:100-500) IF (1:100-500)  <b>Reactivity:</b> Mouse (predicted: Human, Rabbit, Sheep, Cow, Horse)  <b>Predicted MW.:</b> 37 kDa  <b>Subcellular Location:</b> Secreted
<b>Clonality:</b> Polyclonal		
<b>GeneID:</b> 338645	<b>SWISS:</b> Q86TE4	
<b>Target:</b> LUZP2		
<b>Immunogen:</b> KLH conjugated synthetic peptide derived from human LUZP2: 101-200/346.		
<b>Purification:</b> affinity purified by Protein A		
<b>Concentration:</b> 1mg/ml		
<b>Storage:</b> 0.01M TBS (pH7.4) with 1% BSA, 0.02% Proclin300 and 50% Glycerol. Shipped at 4°C. Store at -20°C for one year. Avoid repeated freeze/thaw cycles.		
<b>Background:</b> This gene encodes a leucine zipper protein. This protein is deleted in some patients with Wilms tumor-Aniridia-Genitourinary anomalies-mental Retardation (WAGR) syndrome. Alternate splicing results in multiple transcript variants. [provided by RefSeq, Oct 2011]		

**— VALIDATION IMAGES —**

Paraformaldehyde-fixed, paraffin embedded (Mouse brain); Antigen retrieval by boiling in sodium citrate buffer (pH6.0) for 15min; Block endogenous peroxidase by 3% hydrogen peroxide for 20 minutes; Blocking buffer (normal goat serum) at 37°C for 30min; Antibody incubation with (LUZP2) Polyclonal Antibody, Unconjugated (bs-18446R) at 1:400 overnight at 4°C, followed by operating according to SP Kit(Rabbit) (sp-0023) instructions and DAB staining.