

bs-18435R

[Primary Antibody]

LSM11 Rabbit pAb

BioSS
ANTIBODIES

www.bioss.com.cn

sales@bioss.com.cn

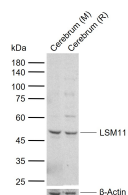
techsupport@bioss.com.cn

400-901-9800

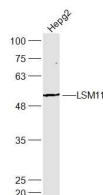
— DATASHEET —

Host: Rabbit	Isotype: IgG	Applications: WB (1:500-2000)
Clonality: Polyclonal		
GeneID: 134353	SWISS: P83369	
Target: LSM11		
Immunogen: KLH conjugated synthetic peptide derived from human LSM11: 261-360/360.		
Purification: affinity purified by Protein A		Reactivity: Human, Mouse, Rat
Concentration: 1mg/ml		
Storage: 0.01M TBS (pH7.4) with 1% BSA, 0.02% Proclin300 and 50% Glycerol. Shipped at 4°C. Store at -20°C for one year. Avoid repeated freeze/thaw cycles.		
Background: LSM11 is a 39.5 kDa protein that is a component of a specialized SMN complex also containing Lsm10. Lsm11 not only specifies the assembly of the U7 Sm core but also fulfills an important role in U7 snRNP-mediated histone mRNA processing.		
		Predicted MW.: 53 kDa
		Subcellular Location: Nucleus

— VALIDATION IMAGES —



Sample: Lane 1: Mouse Cerebrium tissue lysates
Lane 2: Rat Cerebrium tissue lysates Primary:
Anti-LSM11 (bs-18435R) at 1/1000 dilution
Secondary: IRDye800CW Goat Anti-Rabbit IgG at
1/20000 dilution Predicted band size: 53 kDa
Observed band size: 50 kDa



Sample: Hepg2(Human) Cell Lysate at 30 ug
Primary: Anti-LSM11 (bs-18435R) at 1/300
dilution Secondary: IRDye800CW Goat Anti-
Rabbit IgG at 1/20000 dilution Predicted band
size: 53 kD Observed band size: 53 kD