

bs-9897R**[Primary Antibody]**

Glycoprotein VI Rabbit pAb

BioSS
ANTIBODIES

www.bioss.com.cn

sales@bioss.com.cn

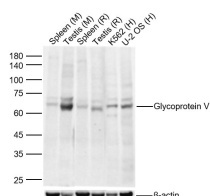
techsupport@bioss.com.cn

400-901-9800

DATASHEET

Host: Rabbit	Isotype: IgG	Applications: WB (1:500-2000)
Clonality: Polyclonal		Reactivity: Human, Mouse, Rat (predicted: Pig, Cow, Horse)
GeneID: 51206	SWISS: Q9HCN6	
Target: Glycoprotein VI		Predicted MW.: 35 kDa
Immunogen: KLH conjugated synthetic peptide derived from human GPVI/Glycoprotein VI: 121-220/339. < Extracellular >		Subcellular Location: Cell membrane
Purification: affinity purified by Protein A		
Concentration: 1mg/ml		
Storage: 0.01M TBS (pH7.4) with 1% BSA, 0.02% Proclin300 and 50% Glycerol. Shipped at 4°C. Store at -20°C for one year. Avoid repeated freeze/thaw cycles.		
Background: This gene encodes a platelet membrane glycoprotein of the immunoglobulin superfamily. The encoded protein is a receptor for collagen and plays a critical role in collagen-induced platelet aggregation and thrombus formation. The encoded protein forms a complex with the Fc receptor gamma-chain that initiates the platelet activation signaling cascade upon collagen binding. Mutations in this gene are a cause of platelet-type bleeding disorder-11 (BDPLT11). Alternatively spliced transcript variants encoding multiple isoforms have been observed for this gene. [provided by RefSeq, Dec 2011].		

VALIDATION IMAGES



Sample: Lane 1: Mouse Spleen Lysates Lane 2: Mouse Testis Lysates Lane 3: Rat Spleen Lysates Lane 4: Rat Testis Lysates Lane 5: Human K562 cell Lysates Lane 6: Human U-2 OS cell Lysates
Primary: Anti-Glycoprotein VI (bs-9897R) at 1/1000 dilution Secondary: IRDye800CW Goat Anti-Rabbit IgG at 1/20000 dilution Predicted band size: 35kDa Observed band size: 65kDa