

bs-11684R**[Primary Antibody]****NPEPPS Rabbit pAb****Bioss**
ANTIBODIES

www.bioss.com.cn

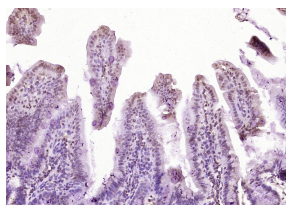
sales@bioss.com.cn

techsupport@bioss.com.cn

400-901-9800

— DATASHEET —

Host: Rabbit	Isotype: IgG	Applications: IHC-P (1:100-500) IHC-F (1:100-500) IF (1:100-500) Reactivity: Mouse (predicted: Human, Rat, Pig, Sheep, Cow, Dog, Horse) Predicted MW.: 103 kDa Subcellular Location: Cytoplasm
Clonality: Polyclonal		
GeneID: 9520	SWISS: P55786	
Target: NPEPPS		
Immunogen: KLH conjugated synthetic peptide derived from human NPEPPS: 201-300/919.		
Purification: affinity purified by Protein A		
Concentration: 1mg/ml		
Storage: 0.01M TBS (pH7.4) with 1% BSA, 0.02% Proclin300 and 50% Glycerol. Shipped at 4°C. Store at -20°C for one year. Avoid repeated freeze/thaw cycles.		
Background: Puromycin-sensitive aminopeptidase is a 100kDa zinc metallopeptidase which degrades neuropeptides by removing amino acid residues from the amino-terminus. The protein is the most abundant aminopeptidase in the brain, however it is not exclusive to that organ. It is localized primarily in the cytoplasm, and plays a role in the metabolism of neuropeptides in nerve terminals and synaptic clefts. The human PSA gene maps to chromosome 17q 2-32.		

— VALIDATION IMAGES —

Paraformaldehyde-fixed, paraffin embedded (Mouse intestine); Antigen retrieval by boiling in sodium citrate buffer (pH6.0) for 15min; Block endogenous peroxidase by 3% hydrogen peroxide for 20 minutes; Blocking buffer (normal goat serum) at 37°C for 30min; Antibody incubation with (NPEPPS) Polyclonal Antibody, Unconjugated (bs-11684R) at 1:400 overnight at 4°C, followed by operating according to SP Kit(Rabbit) (sp-0023) instructions and DAB staining.