
LTB4-R1/LTB4R Rabbit pAb

Catalog Number: bs-21691R

Target Protein: LTB4-R1/LTB4R

Concentration: 1mg/ml

Form: Liquid

Host: Rabbit

Clonality: Polyclonal

Isotype: IgG

Applications: WB (1:500-2000)

Reactivity: Mouse (predicted:Rat, Horse)

Predicted MW: 39 kDa

Subcellular Cell membrane

Locations:

Source: KLH conjugated synthetic peptide derived from mouse LTB4-R1/LTB4R: 201-300/351.

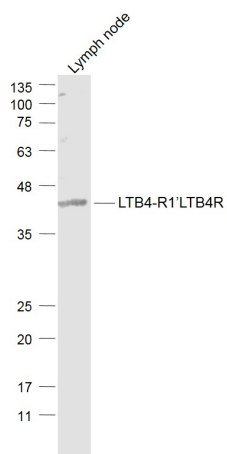
Purification: affinity purified by Protein A

Storage: 0.01M TBS (pH7.4) with 1% BSA, 0.02% Proclin300 and 50% Glycerol.

Shipped at 4°C. Store at -20°C for one year. Avoid repeated freeze/thaw cycles.

Background: Leukotriene B4 Receptor is a member of the GPCR family (subfamily:chemoattractant). It is a receptor for leukotriene B4, a potent chemoattractant involved in inflammation and immune response. It has been reported in blood, bone marrow, brain, heart, liver, and skeletal muscle. In addition, it has been shown to be highly expressed in leukocytes and lymphoid tissues such as spleen, thymus, and lymph node. ESTs have been isolated from B cell/lung/testis, breast, colon, eye, kidney, skin, spleen, testis, and tonsil libraries.

VALIDATION IMAGES



Sample: Lymph node (Mouse) Lysate at 40 ug Primary: Anti-LTB4-R1' LTB4R (bs-21691R) at 1/1000 dilution
 Secondary: IRDye800CW Goat Anti-Rabbit IgG at 1/20000 dilution Predicted band size: 39 kD Observed band
 size: 39 kD

PRODUCT SPECIFIC PUBLICATIONS

[IF=5.201] Yu-fei Chen, et al. Promotion of Bronchopulmonary Dysplasia Progression Using Circular RNA circabcc4 via Facilitating PLA2G6 Expression by Sequestering miR-663a. Front Cell Dev Biol. 2020; 8: 585541 IHC ; Rat . 33195232