

bs-21064R**[Primary Antibody]****PPM1K Rabbit pAb****Bioss**
ANTIBODIES

www.bioss.com.cn

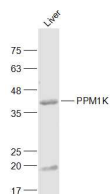
sales@bioss.com.cn

techsupport@bioss.com.cn

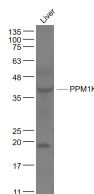
400-901-9800

— DATASHEET —

Host: Rabbit	Isotype: IgG	Applications: WB (1:500-2000)
Clonality: Polyclonal		Reactivity: Mouse, Rat (predicted: Human, Rabbit, Sheep, Cow, Dog, Horse)
GeneID: 152926	SWISS: Q8N3J5	Predicted MW.: 37 kDa
Target: PPM1K		Subcellular Location: Cytoplasm
Immunogen: KLH conjugated synthetic peptide derived from human PPM1K: 281-372/372.		
Purification: affinity purified by Protein A		
Concentration: 1mg/ml		
Storage: 0.01M TBS (pH7.4) with 1% BSA, 0.02% Proclin300 and 50% Glycerol. Shipped at 4°C. Store at -20°C for one year. Avoid repeated freeze/thaw cycles.		
Background: This gene encodes a member of the PPM family of Mn ²⁺ /Mg ²⁺ - dependent protein phosphatases. The encoded protein, essential for cell survival and development, is targeted to the mitochondria where it plays a key role in regulation of the mitochondrial permeability transition pore. [provided by RefSeq, Sep 2012]		

— VALIDATION IMAGES —

Sample: Liver(Rat) Lysate at 40 ug Primary: Anti-PPM1K (bs-21064R) at 1/1000 dilution
Secondary: IRDye800CW Goat Anti-Rabbit IgG at 1/20000 dilution Predicted band size: 37 kD
Observed band size: 39 kD



Sample: Liver (Mouse) Lysate at 40 ug Primary: Anti-PPM1K (bs-21064R) at 1/1000 dilution
Secondary: IRDye800CW Goat Anti-Rabbit IgG at 1/20000 dilution Predicted band size: 37 kD
Observed band size: 37 kD