

**bs-6026R****[ Primary Antibody ]****TSLC1 Rabbit pAb****BioSS**  
**ANTIBODIES**

www.bioss.com.cn

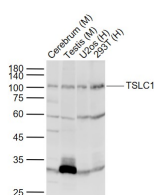
sales@bioss.com.cn

techsupport@bioss.com.cn

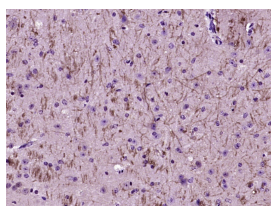
400-901-9800

**DATASHEET**

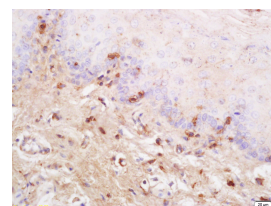
<b>Host:</b> Rabbit <b>Clonality:</b> Polyclonal <b>GeneID:</b> 23705 <b>Target:</b> TSLC1 <b>Immunogen:</b> KLH conjugated synthetic peptide derived from human CADM1: 65-160/442. < Extracellular > <b>Purification:</b> affinity purified by Protein A <b>Concentration:</b> 1mg/ml <b>Storage:</b> 0.01M TBS (pH7.4) with 1% BSA, 0.02% Proclin300 and 50% Glycerol. Shipped at 4°C. Store at -20°C for one year. Avoid repeated freeze/thaw cycles. <b>Background:</b> Mediates homophilic cell-cell adhesion in a Ca(2+)-independent manner. Also mediates heterophilic cell-cell adhesion with CADM3 and PVRL3 in a Ca(2+)-independent manner. Acts as a tumor suppressor in non-small-cell lung cancer (NSCLC) cells. Interaction with CRTAM promotes natural killer (NK) cell cytotoxicity and interferon-gamma (IFN-gamma) secretion by CD8+ cells in vitro as well as NK cell-mediated rejection of tumors expressing CADM3 in vivo. May contribute to the less invasive phenotypes of lepidic growth tumor cells. In mast cells, may mediate attachment to and promote communication with nerves. CADM1, together with MIF, is essential for development and survival of mast cells in vivo. May act as a synaptic cell adhesion molecule that drives synapse assembly. May be involved in neuronal migration, axon growth, pathfinding, and fasciculation on the axons of differentiating neurons. May play diverse roles in the spermatogenesis including in the adhesion of spermatocytes and spermatids to Sertoli cells and for their normal differentiation into mature spermatozoa.	<b>Isotype:</b> IgG <b>SWISS:</b> Q9BY67	<b>Applications:</b> <b>WB</b> (1:500-2000) <b>IHC-P</b> (1:100-500) <b>IHC-F</b> (1:100-500) <b>IF</b> (1:100-500) <b>Reactivity:</b> Human, Mouse, Rat (predicted: Rabbit, Pig, Cow, Dog, Horse) <b>Predicted MW.:</b> 44 kDa <b>Subcellular Location:</b> Cell membrane ,Cytoplasm
---	---	--

**VALIDATION IMAGES**

Sample: Lane 1: Cerebrum (Mouse) Lysate at 40 ug  
Lane 2: Testis (Mouse) Lysate at 40 ug  
Lane 3: U2os (Human) Cell Lysate at 30 ug  
Lane 4: 293T (Human) Cell Lysate at 30 ug  
Primary: Anti-TSLC1 (bs-6026R) at 1/1000 dilution  
Secondary: IRDye800CW Goat Anti-Rabbit IgG at 1/20000 dilution  
Predicted band size: 44 kD  
Observed band size: 100 kD



Paraformaldehyde-fixed, paraffin embedded (Mouse brain); Antigen retrieval by boiling in sodium citrate buffer (pH6.0) for 15min; Block endogenous peroxidase by 3% hydrogen peroxide for 20 minutes; Blocking buffer (normal goat serum) at 37°C for 30min; Antibody incubation with (TSLC1) Polyclonal Antibody, Unconjugated (bs-6026R) at 1:400 overnight at 4°C, followed by operating according to SP Kit(Rabbit) (sp-0023) instructions and DAB staining.



Tissue/cell: rat tongue tissue; 4% Paraformaldehyde-fixed and paraffin-embedded; Antigen retrieval: citrate buffer (0.01M, pH 6.0), Boiling bathing for 15min; Block endogenous peroxidase by 3% Hydrogen peroxide for 30min; Blocking buffer (normal goat serum, C-0005) at 37°C for 20 min; Incubation: Anti-SynCAM/TSLC1 Polyclonal Antibody, Unconjugated(bs-6026R) 1:200, overnight at 4°C, followed by conjugation to the secondary antibody(SP-0023) and DAB(C-0010) staining

**SELECTED CITATIONS**

- **[IF=4.966]** Xiaoxu Zeng. et al. Deficiency in the function of inhibitory interneurons contributes to glutamate - associated central sensitization through GABABR2 - SynCAM1 signaling in chronic migraine rats. Faseb J. 2020

Important Note: This product as supplied is intended for research use only, not for use in human, therapeutic or diagnostic applications.

Nov;34(11):14780-14798 WB ;Rat. 32931071