

bs-6022R**[Primary Antibody]****ASAM Rabbit pAb****BioSS**
ANTIBODIES

www.bioss.com.cn

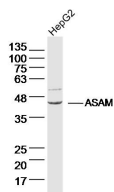
sales@bioss.com.cn

techsupport@bioss.com.cn

400-901-9800

— DATASHEET —

Host: Rabbit	Isotype: IgG	Applications: WB (1:500-2000)
Clonality: Polyclonal		Reactivity: Human (predicted: Mouse, Rat, Rabbit, Sheep, Cow, Dog, Horse)
GeneID: 79827	SWISS: Q9H6B4	Predicted MW.: 39 kDa
Target: ASAM		Subcellular Location: Cell membrane
Immunogen: KLH conjugated synthetic peptide derived from human ASAM/ACAM: 15-110/373. < Extracellular >		
Purification: affinity purified by Protein A		
Concentration: 1mg/ml		
Storage: 0.01M TBS (pH7.4) with 1% BSA, 0.02% Proclin300 and 50% Glycerol. Shipped at 4°C. Store at -20°C for one year. Avoid repeated freeze/thaw cycles.		
Background: The CTX family of proteins, including ASAM, are type I transmembrane proteins within the Ig superfamily that localize to junctional complexes between endothelial and epithelial cells and may play a role in cell-cell adhesion.		

— VALIDATION IMAGES —

Sample: HepG2 Cell Lysate at 40 ug Primary:
Anti-ASAM (bs-6022R) at 1/300 dilution
Secondary: IRDye800CW Goat Anti-Rabbit IgG at
1/20000 dilution Predicted band size: 39 kD
Observed band size: 44 kD

— SELECTED CITATIONS —

- **[IF=6.792]** Zhao D et al. PCB52 exposure alters the neurotransmission ligand-receptors in male offspring and contributes to sex-specific neurodevelopmental toxicity. Environ Pollut.2020 Sep;264:114715. WB ;Rat. 32402713