

**bs-3804R****[ Primary Antibody ]****MSH6 Rabbit pAb****Bioss**  
**ANTIBODIES**

www.bioss.com.cn

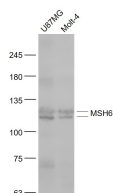
sales@bioss.com.cn

techsupport@bioss.com.cn

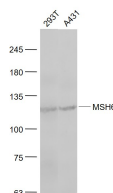
400-901-9800

**— DATASHEET —****Host:** Rabbit**Isotype:** IgG**Clonality:** Polyclonal**GeneID:** 2956**SWISS:** P52701**Target:** MSH6**Immunogen:** KLH conjugated synthetic peptide derived from human MSH6: 812-910/1360.**Purification:** affinity purified by Protein A**Concentration:** 1mg/ml**Storage:** 0.01M TBS (pH7.4) with 1% BSA, 0.02% Proclin300 and 50% Glycerol.

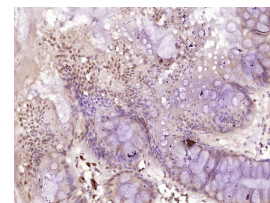
Shipped at 4°C. Store at -20°C for one year. Avoid repeated freeze/thaw cycles.

**Background:** This gene encodes a member of the DNA mismatch repair MutS family. In E. coli, the MutS protein helps in the recognition of mismatched nucleotides prior to their repair. A highly conserved region of approximately 150 aa, called the Walker-A adenine nucleotide binding motif, exists in MutS homologs. The encoded protein heterodimerizes with MSH2 to form a mismatch recognition complex that functions as a bidirectional molecular switch that exchanges ADP and ATP as DNA mismatches are bound and dissociated. Mutations in this gene may be associated with hereditary nonpolyposis colon cancer, colorectal cancer, and endometrial cancer. Transcripts variants encoding different isoforms have been described. [provided by RefSeq, Jul 2013]**Applications:** **WB** (1:500-2000)**IHC-P** (1:100-500)**IHC-F** (1:100-500)**IF** (1:100-500)**Reactivity:** Human, Rat  
(predicted: Mouse, Rabbit,  
Pig, Sheep, Cow, Dog)**Predicted  
MW.:** 153 kDa**Subcellular  
Location:** Nucleus**— VALIDATION IMAGES —**

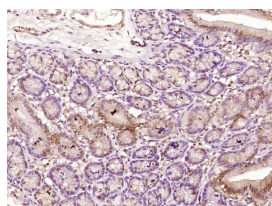
Sample: U87MG(Human) Cell Lysate at 30 ug  
Molt-4(Human) Cell Lysate at 30 ug Primary:  
Anti- MSH6 (bs-3804R) at 1/1000 dilution  
Secondary: IRDye800CW Goat Anti-Rabbit IgG at  
1/20000 dilution Predicted band size: 153 kD  
Observed band size: 120/121 kD



Sample: 293T(Human) Cell Lysate at 30 ug  
A431(Human) Cell Lysate at 30 ug Primary: Anti-  
MSH6 (bs-3804R) at 1/1000 dilution Secondary:  
IRDye800CW Goat Anti-Rabbit IgG at 1/20000  
dilution Predicted band size: 153 kD Observed  
band size: 121 kD



Paraformaldehyde-fixed, paraffin embedded  
(Human colon carcinoma); Antigen retrieval by  
boiling in sodium citrate buffer (pH6.0) for  
15min; Block endogenous peroxidase by 3%  
hydrogen peroxide for 20 minutes; Blocking  
buffer (normal goat serum) at 37°C for 30min;  
Antibody incubation with (MSH6) Polyclonal  
Antibody, Unconjugated (bs-3804R) at 1:400  
overnight at 4°C, followed by operating  
according to SP Kit(Rabbit) (sp-0023)  
instructions and DAB staining.



Paraformaldehyde-fixed, paraffin embedded  
(Rat colon); Antigen retrieval by boiling in

**Important Note:** This product as supplied is intended for research use only, not for use in human, therapeutic or diagnostic applications.

sodium citrate buffer (pH6.0) for 15min; Block endogenous peroxidase by 3% hydrogen peroxide for 20 minutes; Blocking buffer (normal goat serum) at 37°C for 30min; Antibody incubation with (MSH6) Polyclonal Antibody, Unconjugated (bs-3804R) at 1:400 overnight at 4°C, followed by operating according to SP Kit(Rabbit) (sp-0023) instructions and DAB staining.

## — SELECTED CITATIONS —

---

- **[IF=14.919]** Yen, Yu-Ting. et al. Protein phosphatase 2A inactivation induces microsatellite instability, neoantigen production and immune response. Nat Commun. 2021 Dec;12(1):1-14 WB ;Mous,Human. 34911954