

bs-5823R**[Primary Antibody]****CDH6 Rabbit pAb****BioSS**
ANTIBODIES

www.bioss.com.cn

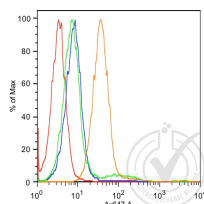
sales@bioss.com.cn

techsupport@bioss.com.cn

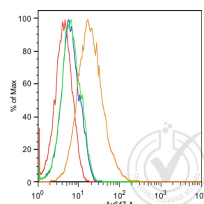
400-901-9800

— DATASHEET —

Host: Rabbit	Isotype: IgG	Applications: Flow-Cyt (1µg/Test)
Clonality: Polyclonal		Reactivity: Human (predicted: Mouse, Rat, Cow, Horse)
GeneID: 1004	SWISS: P55285	
Target: CDH6		Predicted MW.: 82 kDa
Immunogen: KLH conjugated synthetic peptide derived from human K Cadherin: 281-380/790.		Subcellular Location: Cell membrane
Purification: affinity purified by Protein A		
Concentration: 1mg/ml		
Storage: 0.01M TBS (pH7.4) with 1% BSA, 0.02% Proclin300 and 50% Glycerol. Shipped at 4°C. Store at -20°C for one year. Avoid repeated freeze/thaw cycles.		
Background: K Cadherin (Cadherin 6) is a type II classical cadherin from the cadherin superfamily. It is a calcium dependent cell-cell adhesion membrane glycoprotein comprised of five extracellular cadherin repeats, a transmembrane region and a highly conserved cytoplasmic tail. Cadherins preferentially interact with themselves in a homophilic manner in connecting cells. K Cadherin is highly expressed in brain, cerebellum, and kidney. Lung, pancreas, and gastric mucosa show a weak expression. It is also expressed in certain liver and kidney carcinomas.		

— VALIDATION IMAGES —

Histogram of MCF-7 cells stained with anti-K-cadherin (orange), isotype control antibody (green), secondary antibody only (blue) and unstained (red).



Histogram of 786-O cells stained with anti-K-cadherin (orange), isotype control antibody (green), secondary antibody only (blue) and unstained (red).