

bs-21054R

[Primary Antibody]

PPCS Rabbit pAb

Bioss
ANTIBODIES

www.bioss.com.cn

sales@bioss.com.cn

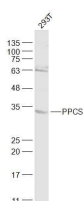
techsupport@bioss.com.cn

400-901-9800

— DATASHEET —

Host: Rabbit	Isotype: IgG	Applications: WB (1:500-2000)
Clonality: Polyclonal		Reactivity: Human (predicted: Mouse, Rat, Pig, Sheep, Cow, Dog)
GeneID: 79717	SWISS: Q9HAB8	
Target: PPCS		Predicted MW.: 34 kDa
Immunogen: KLH conjugated synthetic peptide derived from human PPCS: 21-120/311.		Subcellular Location: Cytoplasm
Purification: affinity purified by Protein A		
Concentration: 1mg/ml		
Storage: 0.01M TBS (pH7.4) with 1% BSA, 0.02% Proclin300 and 50% Glycerol. Shipped at 4°C. Store at -20°C for one year. Avoid repeated freeze/thaw cycles.		
Background: Biosynthesis of coenzyme A (CoA) from pantothenic acid (vitamin B5) is an essential universal pathway in prokaryotes and eukaryotes. PPCS (EC 6.3.2.5), one of the last enzymes in this pathway, converts phosphopantothenate to phosphopantothenoylcysteine (Daugherty et al., 2002 [PubMed 11923312]).[supplied by OMIM, Mar 2008]		

— VALIDATION IMAGES —



Sample: 293T(Human) Cell Lysate at 30 ug
Primary: Anti-PPCS (bs-21054R) at 1/1000
dilution Secondary: IRDye800CW Goat Anti-
Rabbit IgG at 1/20000 dilution Predicted band
size: 34 kD Observed band size: 34 kD