

**bs-21038R****[ Primary Antibody ]****ROD1/PTBP3 Rabbit pAb****Bioss**  
**ANTIBODIES**

www.bioss.com.cn

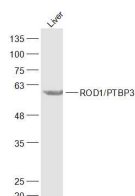
sales@bioss.com.cn

techsupport@bioss.com.cn

400-901-9800

**— DATASHEET —**

<b>Host:</b> Rabbit	<b>Isotype:</b> IgG	<b>Applications:</b> WB (1:500-2000)
<b>Clonality:</b> Polyclonal		<b>Reactivity:</b> Mouse, Rat (predicted: Human, Rabbit, Pig, Sheep, Cow, Zebrafish, Dog, Horse, Danio)
<b>GeneID:</b> 9991	<b>SWISS:</b> O95758	<b>Predicted MW.:</b> 60 kDa
<b>Target:</b> ROD1/PTBP3		<b>Subcellular Location:</b> Nucleus
<b>Immunogen:</b> KLH conjugated synthetic peptide derived from human ROD1/PTBP3: 201-300/552.		
<b>Purification:</b> affinity purified by Protein A		
<b>Concentration:</b> 1mg/ml		
<b>Storage:</b> 0.01M TBS (pH7.4) with 1% BSA, 0.02% Proclin300 and 50% Glycerol. Shipped at 4°C. Store at -20°C for one year. Avoid repeated freeze/thaw cycles.		
<b>Background:</b> The protein encoded by this gene binds RNA and is a regulator of cell differentiation. The encoded protein preferentially binds to poly(G) and poly(U) sequences in vitro. Several transcript variants encoding different isoforms have been found for this gene. [provided by RefSeq, Oct 2011]		

**— VALIDATION IMAGES —**

Sample: Liver (Mouse) Lysate at 40 ug Primary:  
Anti-ROD1/PTBP3 (bs-21038R) at 1/300 dilution  
Secondary: IRDye800CW Goat Anti-Rabbit IgG at  
1/20000 dilution Predicted band size: 60 kD  
Observed band size: 60 kD

**— SELECTED CITATIONS —**

- **[IF=9]** Du Yang. et al. Plk1 promotes renal tubulointerstitial fibrosis by targeting autophagy/lysosome axis. CELL DEATH DIS. 2023 Aug;14(8):1-16 WB,IHC ;Mouse. 37640723
- **[IF=2.095]** Zhou W et al. MiR-384 inhibits proliferation and migration of trophoblast cells via targeting PTBP3. Pregnancy Hypertens . 2020 Jul;21:132-138. WB ;Human. 32512528