

bs-11348R**[Primary Antibody]**

Hippocalcin Rabbit pAb

BioSS
ANTIBODIES

www.bioss.com.cn

sales@bioss.com.cn

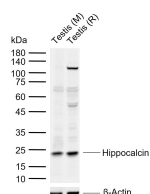
techsupport@bioss.com.cn

400-901-9800

— DATASHEET —

Host: Rabbit	Isotype: IgG	Applications: WB (1:500-2000) Reactivity: Mouse, Rat (predicted: Human, Rabbit, Cow, Chicken) Predicted MW.: 22 kDa
Clonality: Polyclonal		
GeneID: 3208	SWISS: P84074	
Target: Hippocalcin		
Immunogen: KLH conjugated synthetic peptide derived from human Hippocalcin: 101-193/193.		
Purification: affinity purified by Protein A		
Concentration: 1mg/ml		
Storage: 0.01M TBS (pH7.4) with 1% BSA, 0.02% Proclin300 and 50% Glycerol. Shipped at 4°C. Store at -20°C for one year. Avoid repeated freeze/thaw cycles.		
Background: Hippocalcin is a neuron-specific calcium-binding protein found primarily in the plasma membrane of brain and retinal tissue, with increased expression observed in hippocampal pyramidal cells. Through its calcium-dependent signal regulation, hippocalcin can both inhibit rhodopsin kinase and increase phospholipase D2 expression. In order to regulate kinase and phospholipase activity, hippocalcin must bind to the plasma membrane where it can then bind two calcium ions for use in signal regulation. The hippocalcin protein is highly conserved in mouse, rat and human tissue and has a suggested role in neural plasticity and associative memory by contributing to the survival of neurons during aging. The loss of hippocalcin expression is thought to contribute to age-related impairment of post-synaptic functions related to neuronal degradation.		

— VALIDATION IMAGES —



Sample: Lane 1: Mouse Testis tissue lysates Lane
2: Rat Testis tissue lysates Primary: Anti-
Hippocalcin (bs-11348R) at 1/1000 dilution
Secondary: IRDye800CW Goat Anti-Rabbit IgG at
1/20000 dilution Predicted band size: 22 kDa
Observed band size: 23 kDa