

bs-23656R**[Primary Antibody]****BioSS**
ANTIBODIES

www.bioss.com.cn

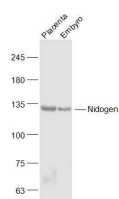
sales@bioss.com.cn

techsupport@bioss.com.cn

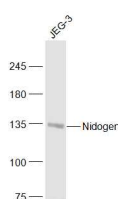
400-901-9800

Nidogen Rabbit pAb**— DATASHEET —**

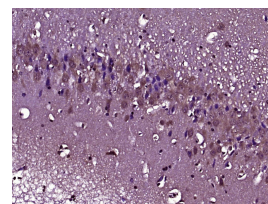
Host: Rabbit	Isotype: IgG	Applications: WB (1:500-2000) IHC-P (1:100-500) IHC-F (1:100-500) IF (1:100-500) Reactivity: Human, Mouse, Rat Predicted MW.: 133 kDa Subcellular Location: Secreted ,Extracellular matrix ,Cell membrane
Clonality: Polyclonal		
GeneID: 4811	SWISS: P14543	
Target: Nidogen		
Immunogen: KLH conjugated synthetic peptide derived from human Nidogen: 201-300/1247.		
Purification: affinity purified by Protein A		
Concentration: 1mg/ml		
Storage: 0.01M TBS (pH7.4) with 1% BSA, 0.02% Proclin300 and 50% Glycerol. Shipped at 4°C. Store at -20°C for one year. Avoid repeated freeze/thaw cycles.		
Background: Basement membranes are the earliest extracellular matrices produced during embryogenesis. They are synthesized and incorporated into the supramolecular architecture of several components, including laminins, Collagen IV, Nidogen and proteoglycans. Nidogen/Entactin, a sulfated glycoprotein, acts as a link between the extracellular matrix molecules Laminin 1 and Collagen Type IV, and thereby participates in the assembly of basement membranes. Nidogen is a highly conserved member of the Nidogen family, which also includes Nidogen-2. Nidogen-2 has a high level of N- and O-glycosylation, and it interacts with Collagens Type I and IV and Perlecan at a comparable level to Nidogen. Nidogen is synthesized and secreted in primary and established mesenchymal peritubular cells and myoepithelial cells, and it affects adhesion of peritubular cells in an autocrine manner. Nidogen is expressed during embryonic and fetal development exclusively in fully developed basement membranes of the ectoderm and is not expressed in the developing endodermal basement membrane or in membranes disrupted during mesoderm formation. Nidogen also cooperates with Laminin 1 to regulate b-casein expression.		

— VALIDATION IMAGES —

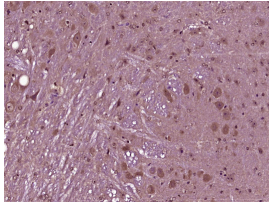
Sample: Placenta (Mouse) Lysate at 40 ug
 Embryo (Mouse) Lysate at 40 ug
 Primary: Anti-Nidogen (bs-23656R) at 1/1000 dilution
 Secondary: IRDye800CW Goat Anti-Rabbit IgG at 1/20000 dilution
 Predicted band size: 133 kD
 Observed band size: 133 kD



Sample: JEG-3(Human) Cell Lysate at 30 ug
 Primary: Anti-Nidogen (bs-23656R) at 1/1000 dilution
 Secondary: IRDye800CW Goat Anti-Rabbit IgG at 1/20000 dilution
 Predicted band size: 133 kD
 Observed band size: 133 kD



Paraformaldehyde-fixed, paraffin embedded (Rat brain); Antigen retrieval by boiling in sodium citrate buffer (pH6.0) for 15min; Block endogenous peroxidase by 3% hydrogen peroxide for 20 minutes; Blocking buffer (normal goat serum) at 37°C for 30min; Antibody incubation with (Nidogen) Polyclonal Antibody, Unconjugated (bs-23656R) at 1:400 overnight at 4°C, followed by operating according to SP Kit(Rabbit) (sp-0023) instructions and DAB staining.



Paraformaldehyde-fixed, paraffin embedded (Mouse brain); Antigen retrieval by boiling in sodium citrate buffer (pH6.0) for 15min; Block endogenous peroxidase by 3% hydrogen peroxide for 20 minutes; Blocking buffer (normal goat serum) at 37°C for 30min; Antibody incubation with (Nidogen) Polyclonal Antibody, Unconjugated (bs-23656R) at 1:400 overnight at 4°C, followed by operating according to SP Kit(Rabbit) (sp-0023) instructions and DAB staining.