

PHLP Rabbit pAb

Catalog Number: bs-5812R

Target Protein: PHLP

Concentration: 1mg/ml

Form: Liquid

Host: Rabbit

Clonality: Polyclonal

Isotype: IgG

Applications: WB (1:500-2000), IHC-P (1:100-500), IHC-F (1:100-500), IF (1:100-500)

Reactivity: Human, Mouse, Rat (predicted:Rabbit, Pig, Chicken, Horse)

Predicted MW: 34 kDa

Entrez Gene: 5082

Swiss Prot: Q13371

Source: KLH conjugated synthetic peptide derived from human PHLP: 51-150/301.

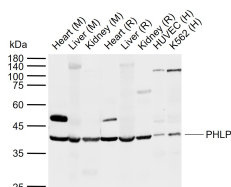
Purification: affinity purified by Protein A

Storage: 0.01M TBS (pH7.4) with 1% BSA, 0.02% Proclin300 and 50% Glycerol.

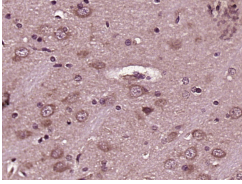
Shipped at 4°C. Store at -20°C for one year. Avoid repeated freeze/thaw cycles.

Background: Phosducin-like protein is a putative modulator of heterotrimeric G proteins. The protein shares extensive amino acid sequence homology with phosducin, a phosphoprotein expressed in retina and pineal gland. Both phosducin-like protein and phosphoducin have been shown to regulate G-protein signaling by binding to the beta-gamma subunits of G proteins. [provided by RefSeq, Jul 2008]

VALIDATION IMAGES



Sample: Lane 1: Mouse Heart tissue lysates Lane 2: Mouse Liver tissue lysates Lane 3: Mouse Kidney tissue lysates Lane 4: Rat Heart tissue lysates Lane 5: Rat Liver tissue lysates Lane 6: Rat Kidney tissue lysates Lane 7: Human HUVEC cell lysates Lane 8: Human K562 cell lysates Primary: Anti-PHLP (bs-5812R) at 1/1000 dilution Secondary: IRDye800CW Goat Anti-Rabbit IgG at 1/20000 dilution Predicted band size: 34 kDa Observed band size: 40 kDa



Paraformaldehyde-fixed, paraffin embedded (Rat brain); Antigen retrieval by boiling in sodium citrate buffer (pH6.0) for 15min; Block endogenous peroxidase by 3% hydrogen peroxide for 20 minutes; Blocking buffer (normal goat serum) at 37°C for 30min; Antibody incubation with (PHLP) Polyclonal Antibody, Unconjugated (bs-5812R) at 1:400 overnight at 4°C, followed by operating according to SP Kit(Rabbit) (sp-0023) instructions and DAB staining.