

**bs-22513R****[ Primary Antibody ]****Aquaporin 8 Rabbit pAb****BioSS**  
**ANTIBODIES**

www.bioss.com.cn

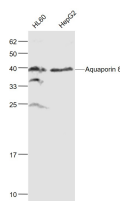
sales@bioss.com.cn

techsupport@bioss.com.cn

400-901-9800

**— DATASHEET —**

<b>Host:</b> Rabbit	<b>Isotype:</b> IgG	<b>Applications:</b> WB (1:500-2000)
<b>Clonality:</b> Polyclonal		<b>Reactivity:</b> Human
<b>GeneID:</b> 343	<b>SWISS:</b> O94778	
<b>Target:</b> Aquaporin 8		
<b>Purification:</b> affinity purified by Protein A		<b>Predicted MW.:</b> 29 kDa
<b>Concentration:</b> 1mg/ml		<b>Subcellular Location:</b> Cell membrane
<b>Storage:</b> 0.01M TBS (pH7.4) with 1% BSA, 0.02% Proclin300 and 50% Glycerol. Shipped at 4°C. Store at -20°C for one year. Avoid repeated freeze/thaw cycles.		
<b>Background:</b> Forms a water-specific channel; mercury-sensitive. plays a role in water transport across hepatocyte membranes [RGD, Feb 2006]		

**— VALIDATION IMAGES —**

Sample: HL60(Human) Cell Lysate at 30 ug  
HepG2(Human) Cell Lysate at 30 ug Primary:  
Anti-Aquaporin 8 (bs-22513R) at 1/1000 dilution  
Secondary: IRDye800CW Goat Anti-Rabbit IgG at  
1/20000 dilution Predicted band size: 27/38 kD  
Observed band size: 38 kD