

---

## FRS2 Rabbit pAb

Catalog Number: bs-6913R

Target Protein: FRS2

Concentration: 1mg/ml

Form: Liquid

Host: Rabbit

Clonality: Polyclonal

Isotype: IgG

Applications: IHC-P (1:100-500), IHC-F (1:100-500), IF (1:100-500)

Reactivity: Rat (predicted:Human, Mouse, Rabbit, Pig, Cow, Horse)

Predicted MW: 57 kDa

Entrez Gene: 10818

Swiss Prot: Q8WU20

Source: KLH conjugated synthetic peptide derived from human FRS2: 221-320/508.

Purification: affinity purified by Protein A

Storage: 0.01M TBS (pH7.4) with 1% BSA, 0.02% Proclin300 and 50% Glycerol.

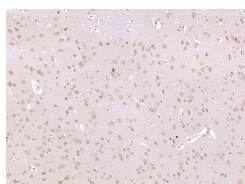
Shipped at 4°C. Store at -20°C for one year. Avoid repeated freeze/thaw cycles.

Background: Adapter protein that links FGR and NGF receptors to downstream signaling pathways.

Involved in the activation of MAP kinases. Modulates signaling via SHC1 by competing for a common binding site on NTRK1.

Tissue specificity: Highly expressed in heart, brain, spleen, lung, liver, skeletal muscle, kidney and testis.

### VALIDATION IMAGES



Paraformaldehyde-fixed, paraffin embedded (Rat brain); Antigen retrieval by boiling in sodium citrate buffer (pH6.0) for 15min; Block endogenous peroxidase by 3% hydrogen peroxide for 20 minutes; Blocking buffer (normal goat serum) at 37°C for 30min; Antibody incubation with (FRS2) Polyclonal Antibody, Unconjugated (bs-6913R) at 1:400 overnight at 4°C, followed by operating according to SP Kit(Rabbit) (sp-0023) instructions and DAB staining.