

**bs-5810R****[ Primary Antibody ]****Bioss**  
ANTIBODIES

www.bioss.com.cn

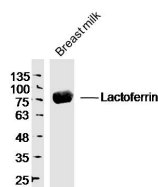
sales@bioss.com.cn

techsupport@bioss.com.cn

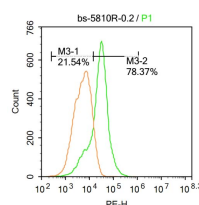
400-901-9800

**Lactoferrin Rabbit pAb****DATASHEET**

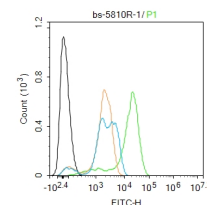
<b>Host:</b> Rabbit	<b>Isotype:</b> IgG	<b>Applications:</b> WB (1:500-2000) Flow-Cyt (1ug/test)
<b>Clonality:</b> Polyclonal		
<b>GeneID:</b> 4057	<b>SWISS:</b> P02788	<b>Reactivity:</b> Human (predicted: Mouse, Rat, Pig, Sheep, Cow, Dog, Horse)
<b>Target:</b> Lactoferrin		
<b>Immunogen:</b> KLH conjugated synthetic peptide derived from human Lactoferrin: 611-710/710.		
<b>Purification:</b> affinity purified by Protein A		<b>Predicted MW.:</b> 76 kDa
<b>Concentration:</b> 1mg/ml		<b>Subcellular Location:</b> Secreted ,Cytoplasm ,Nucleus
<b>Storage:</b> 0.01M TBS (pH7.4) with 1% BSA, 0.02% Proclin300 and 50% Glycerol. Shipped at 4°C. Store at -20°C for one year. Avoid repeated freeze/thaw cycles.		
<b>Background:</b> Transferrins are iron binding transport proteins which can bind two Fe(3+) ions in association with the binding of an anion, usually bicarbonate. Lactotransferrin has antimicrobial activity which depends on the extracellular cation concentration. Lactoferrins A, B and C have opioid antagonist activity. Lactoferrin A shows preference for mu-receptors, while lactoferrin B and C have somewhat higher degrees of preference for kappa-receptors than for mu-receptors. The lactotransferrin transferrin-like domain 1 functions as a serine protease of the peptidase S60 family that cuts arginine rich regions. This function contributes to the antimicrobial activity.		

**VALIDATION IMAGES**

Sample: Breast milk (Human) Lysate at 40 ug  
 Primary: Anti-Lactoferrin (bs-5810R) at 1/300  
 dilution Secondary: IRDye800CW Goat Anti-  
 Rabbit IgG at 1/20000 dilution Predicted band  
 size: 76 kD Observed band size: 76 kD



U-937 cells were fixed with 4% PFA for 10min at room temperature, permeabilized with 90% ice-cold methanol for 20 min at room temperature, and incubated in 5% BSA blocking buffer for 30 min at room temperature. Cells were then stained with Lactoferrin Antibody (bs-5810R) at 1:500 dilution in blocking buffer and incubated for 30 min at room temperature, washed twice with 2% BSA in PBS, followed by secondary antibody incubation for 40 min at room temperature. Acquisitions of 20,000 events were performed. Cells stained with primary antibody (green), and isotype control (orange).



Blank control: U-937. Primary Antibody (green line): Rabbit Anti-Lactoferrin antibody (bs-5810R) Dilution: 1ug/Test; Secondary Antibody : Goat anti-rabbit IgG-FITC Dilution: 0.5ug/Test. Protocol The cells were fixed with 4% PFA (10min at room temperature) and then permeabilized with 0.1% PBST for 20 min at room temperature. The cells were then incubated in 5% BSA to block non-specific protein-protein interactions for 30 min at room temperature. Cells stained with Primary Antibody for 30 min at room temperature. The secondary antibody used for 40 min at room temperature. Acquisition of 20,000 events was performed.

**SELECTED CITATIONS**

- **[IF=15.992]** Tsatsanis, Andrew. et al. The acute phase protein lactoferrin is a key feature of Alzheimer's disease and predictor of Aβ burden through induction of APP amyloidogenic processing. Mol Psychiatr. 2021 Aug;;1-16 IP ;Human. 34400772

Important Note: This product as supplied is intended for research use only, not for use in human, therapeutic or diagnostic applications.

- **[IF=12.12]** Zhao et al. Neutrophil polarization by IL-27 as a therapeutic target for intracerebral hemorrhage. (2017) Nat. Commun. 8:602 WB ;Mouse, Rat. 28928459
- **[IF=11.799]** Zhongnan Xiao. et al. Reduction of lactoferrin aggravates neuronal ferroptosis after intracerebral hemorrhagic stroke in hyperglycemic mice. Redox Biol. 2022 Apr;50:102256 IF, WB ;Mouse. 35131600
- **[IF=8.109]** Carman Man et al. Aging-Associated Alterations in Mammary Epithelia and Stroma Revealed by Single-Cell RNA Sequencing Cell Rep. 2020 Dec 29;33(13):108566. IHC ;Mouse. 33378681