

bs-20121R**[Primary Antibody]****HDLBP Rabbit pAb****BioSS**
ANTIBODIES

www.bioss.com.cn

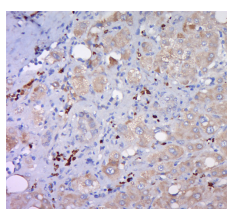
sales@bioss.com.cn

techsupport@bioss.com.cn

400-901-9800

— DATASHEET —

Host: Rabbit	Isotype: IgG	Applications: IHC-P (1:100-500) IHC-F (1:100-500) IF (1:100-500) Reactivity: Human Predicted MW.: 140 kDa Subcellular Location: Cytoplasm ,Nucleus
Clonality: Polyclonal		
GeneID: 3069	SWISS: Q00341	
Target: HDLBP		
Immunogen: KLH conjugated synthetic peptide derived from human HDLBP: 51-150/1268.		
Purification: affinity purified by Protein A		
Concentration: 1mg/ml		
Storage: Preservative: 0.02% Proclin300, Constituents: 1% BSA, 0.01M PBS, pH7.4. Shipped at 4°C. Store at -20°C for one year. Avoid repeated freeze/thaw cycles.		
Background: High density lipoprotein-binding protein, HDLBP, also known as vigilin, specifically binds HDL molecules and may function in the removal of excess cellular cholesterol. It may also be involved in the regulation of the delivery of fats to cells for energy and storage as fats in the bloodstream are not readily metabolized in the absence of HDLBP.		

— VALIDATION IMAGES —

Paraformaldehyde-fixed, paraffin embedded (human liver carcinoma); Antigen retrieval by boiling in sodium citrate buffer (pH6.0) for 15min; Block endogenous peroxidase by 3% hydrogen peroxide for 20 minutes; Blocking buffer (normal goat serum) at 37°C for 30min; Antibody incubation with (HDLBP) Polyclonal Antibody, Unconjugated (bs-20121R) at 1:400 overnight at 4°C, followed by a conjugated secondary (sp-0023) for 20 minutes and DAB staining.