

bs-20177R**[Primary Antibody]****ADRB1 Rabbit pAb****Bioss**
ANTIBODIES

www.bioss.com.cn

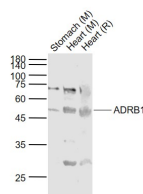
sales@bioss.com.cn

techsupport@bioss.com.cn

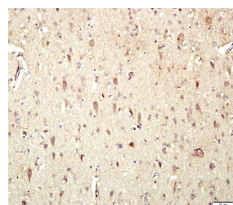
400-901-9800

— DATASHEET —

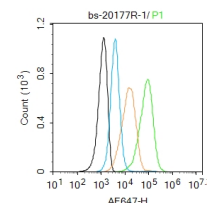
Host: Rabbit	Isotype: IgG	Applications: WB (1:500-2000) IHC-P (1:100-500) IHC-F (1:100-500) IF (1:100-500) Flow-Cyt (1 μ g/Test)
Clonality: Polyclonal		Reactivity: Human, Mouse, Rat (predicted: Pig, Dog)
GeneID: 153	SWISS: P08588	
Target: ADRB1		
Immunogen: KLH conjugated synthetic peptide derived from human ADRB1: 181-250/477. < Extracellular >		
Purification: affinity purified by Protein A		
Concentration: 1mg/ml		
Storage: Preservative: 0.02% Proclin300, Constituents: 1% BSA, 0.01M PBS, pH7.4. Shipped at 4°C. Store at -20°C for one year. Avoid repeated freeze/thaw cycles.		Predicted MW.: 52 kDa
Background: Beta-adrenergic receptors (Beta-1 adrenoceptor) mediate the catecholamine-induced activation of adenylate cyclase through the action of G proteins. This receptor binds epinephrine and norepinephrine with approximately equal affinity. Subcellular location cell membrane; Multi-pass membrane protein. Homologous desensitization of the receptor is mediated by its phosphorylation by beta-adrenergic receptor kinase. Belongs to the G-protein coupled receptor 1 family.		Subcellular Location: Cell membrane

— VALIDATION IMAGES —

Sample: Lane 1: Stomach (Mouse) Lysate at 40 μ g Lane 2: Heart (Mouse) Lysate at 40 μ g Lane 3: Heart (Rat) Lysate at 40 μ g Primary: Anti-ADRB1 (bs-20177R) at 1/1000 dilution Secondary: IRDye800CW Goat Anti-Rabbit IgG at 1/20000 dilution Predicted band size: 52 kD Observed band size: 50 kD



Paraformaldehyde-fixed, paraffin embedded (human brain glioma); Antigen retrieval by boiling in sodium citrate buffer (pH6.0) for 15min; Block endogenous peroxidase by 3% hydrogen peroxide for 20 minutes; Blocking buffer (normal goat serum) at 37°C for 30min; Antibody incubation with (ADRB1) Polyclonal Antibody, Unconjugated (bs-20177R) at 1:400 overnight at 4°C, followed by a conjugated secondary (sp-0023) for 20 minutes and DAB staining.



Blank control:U937. Primary Antibody (green line): Rabbit Anti-ADRB1 antibody (bs-20177R) Dilution: 1 μ g /10⁶ cells; Isotype Control Antibody (orange line): Rabbit IgG . Secondary Antibody : Goat anti-rabbit IgG-AF647 Dilution: 1 μ g /test. Protocol The cells were incubated in 5%BSA to block non-specific protein-protein interactions for 30 min at room temperature .Cells stained with Primary Antibody for 30 min at room temperature. The secondary antibody used for 40 min at room temperature. Acquisition of 20,000 events was performed.

— SELECTED CITATIONS —

- **[IF=6.8]** Zheng Yanyan. et al. Paternal methamphetamine exposure induces higher sensitivity to methamphetamine in male offspring through driving ADRB1 on CaMKII-positive neurons in mPFC. TRANSL PSYCHIAT. 2023 Oct;13(1):1-12 IF, WB ;Mouse. 37857642
- **[IF=5.955]** Nguyen Khanh Toan. et al. Ascorbic acid induces salivary gland function through TET2/acetylcholine receptor signaling in aging SAMP1/Klotho (-/-) mice.. AGING-US. 2022 Aug;14(15):6028-6046 WB ;Mouse. 35951355
- **[IF=3.329]** Enivwenaye E.W. Nabofa et al. Cardiovascular Effects of Caffeine in Rabbits Involve Beta-1 Adrenergic

Important Note: This product as supplied is intended for research use only, not for use in human, therapeutic or diagnostic applications.

Receptor Activation. IHC ;rabbit. 10.1089/caff.2019.0019