

bs-9636R**[Primary Antibody]****BioSS**
ANTIBODIES

www.bioss.com.cn

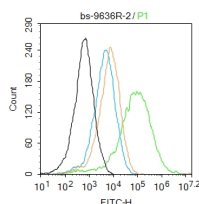
sales@bioss.com.cn

techsupport@bioss.com.cn

400-901-9800

XTP4 Rabbit pAb**DATASHEET**

Host: Rabbit	Isotype: IgG	Applications: Flow-Cyt (2ug/Test)
Clonality: Polyclonal		Reactivity: Mouse (predicted: Human, Rat, Rabbit, Pig, Sheep, Cow, Dog, Horse)
GeneID: 84299	SWISS: Q9BRT3	
Target: XTP4		Predicted MW.: 12 kDa
Immunogen: KLH conjugated synthetic peptide derived from human XTP4: 33-130/616.		Subcellular Location: Cell membrane ,Cytoplasm
Purification: affinity purified by Protein A		
Concentration: 1mg/ml		
Storage: 0.01M TBS (pH7.4) with 1% BSA, 0.02% Proclin300 and 50% Glycerol. Shipped at 4°C. Store at -20°C for one year. Avoid repeated freeze/thaw cycles.		
Background: Increases cell migration by inducing filopodia formation at the leading edge of migrating cells. Plays a role in regulation of apoptosis, possibly through control of CASP3. May be involved in a redox-related process.		

VALIDATION IMAGES

Blank control: Mouse kidney. Primary Antibody (green line): Rabbit Anti-XTP4 antibody (bs-9636R) Dilution: 2 μ g /10⁶ cells; Isotype Control Antibody (orange line): Rabbit IgG . Secondary Antibody : Goat anti-rabbit IgG-AF488 Dilution: 1 μ g /test. Protocol The cells were fixed with 4% PFA (10min at room temperature) and then permeabilized with 0.1% PBST for 20 min at room temperature. The cells were then incubated in 5% BSA to block non-specific protein-protein interactions for 30 min at room temperature. Cells stained with Primary Antibody for 30 min at room temperature. The secondary antibody used for 40 min at room temperature. Acquisition of 20,000 events was performed.

SELECTED CITATIONS

- **[IF=5]** Zhuna Wu. et al. A novel immune-related risk-scoring system associated with the prognosis and response of cervical cancer patients treated with radiation therapy. FRONT MOL BIOSCI. 2023; 10: 1297774 IHC ;Human. 38028542