

bs-14164R**[Primary Antibody]****CYP4Z2P Rabbit pAb****BioSS**
ANTIBODIES

www.bioss.com.cn

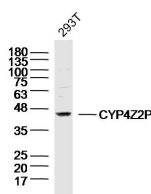
sales@bioss.com.cn

techsupport@bioss.com.cn

400-901-9800

— DATASHEET —

Host: Rabbit	Isotype: IgG	Applications: WB (1:500-2000)
Clonality: Polyclonal		Reactivity: Human
GeneID: 163720	SWISS: Q8N1L4	
Target: CYP4Z2P		
Immunogen: KLH conjugated synthetic peptide derived from human CYP4Z2P: 51-150/340.		Predicted MW.: 40 kDa
Purification: affinity purified by Protein A		Subcellular Location: Cell membrane
Concentration: 1mg/ml		
Storage: 0.01M TBS (pH7.4) with 1% BSA, 0.02% Proclin300 and 50% Glycerol. Shipped at 4°C. Store at -20°C for one year. Avoid repeated freeze/thaw cycles.		

— VALIDATION IMAGES —

Sample: 293T (Human) Cell Lysate at 40 ug
Primary: Anti-CYP4Z2P(bs-14164R) at 1/300
dilution Secondary: IRDye800CW Goat Anti-
Rabbit IgG at 1/20000 dilution Predicted band
size: 40kD Observed band size: 40kD