

**bs-21658R**

**[ Primary Antibody ]**

## CT054 Rabbit pAb

**Bioss**  
ANTIBODIES

www.bioss.com.cn

sales@bioss.com.cn

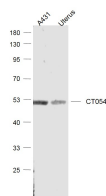
techsupport@bioss.com.cn

400-901-9800

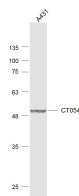
### — DATASHEET —

<b>Host:</b> Rabbit	<b>Isotype:</b> IgG	<b>Applications:</b> WB (1:500-2000)
<b>Clonality:</b> Polyclonal		
<b>GeneID:</b> 113278	<b>SWISS:</b> Q9NQ40	
<b>Target:</b> CT054		
<b>Immunogen:</b> KLH conjugated synthetic peptide derived from human CT054 : 211-310/469.		
<b>Purification:</b> affinity purified by Protein A		<b>Reactivity:</b> Human, Mouse
<b>Concentration:</b> 1mg/ml		
<b>Storage:</b> 0.01M TBS (pH7.4) with 1% BSA, 0.02% Proclin300 and 50% Glycerol. Shipped at 4°C. Store at -20°C for one year. Avoid repeated freeze/thaw cycles.		<b>Predicted MW.:</b> 51 kDa
<b>Background:</b> CT054 is a Riboflavin transporter. Riboflavin transport is Na+-independent but moderately pH-sensitive. Activity is strongly inhibited by riboflavin analogs, such as lumiflavin, flavin mononucleotide (FMN) and flavin adenine dinucleotide (FAD), and to a lesser extent by amiloride.		<b>Subcellular Location:</b> Cell membrane

### — VALIDATION IMAGES —



Sample: A431(Human) Cell Lysate at 30 ug  
Uterus (Mouse) Lysate at 40 ug Primary: Anti-CT054 (bs-21658R) at 1/1000 dilution Secondary: IRDye800CW Goat Anti-Rabbit IgG at 1/20000 dilution Predicted band size: 51 kD Observed band size: 51 kD



Sample: A431(Human) Cell Lysate at 30 ug  
Primary: Anti-CT054 (bs-21658R) at 1/1000 dilution Secondary: IRDye800CW Goat Anti-Rabbit IgG at 1/20000 dilution Predicted band size: 51 kD Observed band size: 51 kD