
PLCG1 Rabbit pAb

Catalog Number: bs-3533R

Target Protein: PLCG1

Concentration: 1mg/ml

Form: Liquid

Host: Rabbit

Clonality: Polyclonal

Isotype: IgG

Applications: **WB** (1:500-2000)

Reactivity: Mouse (predicted: Human, Rat, Pig, Cow, GuineaPig)

Predicted MW: 148 kDa

Subcellular Cytoplasm ,Nucleus

Locations:

Entrez Gene: 5335

Swiss Prot: P19174

Source: KLH conjugated synthetic peptide derived from human PLC gamma 1: 1101-1200/1290.

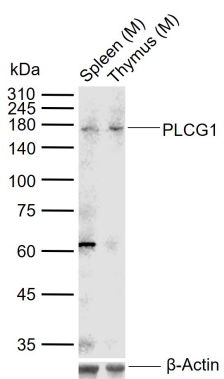
Purification: affinity purified by Protein A

Storage: 0.01M TBS (pH7.4) with 1% BSA, 0.02% Proclin300 and 50% Glycerol.

Shipped at 4°C. Store at -20°C for one year. Avoid repeated freeze/thaw cycles.

Background: The protein encoded by this gene catalyzes the formation of inositol 1,4,5-trisphosphate and diacylglycerol from phosphatidylinositol 4,5-bisphosphate. This reaction uses calcium as a cofactor and plays an important role in the intracellular transduction of receptor-mediated tyrosine kinase activators. For example, when activated by SRC, the encoded protein causes the Ras guanine nucleotide exchange factor RasGRP1 to translocate to the Golgi, where it activates Ras. Also, this protein has been shown to be a major substrate for heparin-binding growth factor 1 (acidic fibroblast growth factor)-activated tyrosine kinase. Two transcript variants encoding different isoforms have been found for this gene. [provided by RefSeq, Jul 2008].

VALIDATION IMAGES



Sample: Lane 1: Mouse Spleen tissue lysates Lane 2: Mouse Thymus tissue lysates Primary: Anti-PLCG1 (bs-3533R) at 1/1000 dilution Secondary: IRDye800CW Goat Anti-Rabbit IgG at 1/20000 dilution Predicted band size: 148 kDa Observed band size: 170 kDa