

**bs-3338R****[ Primary Antibody ]****phospho-PLCG 2 (Tyr1217) Rabbit pAb****Bioss**  
**ANTIBODIES**

www.bioss.com.cn

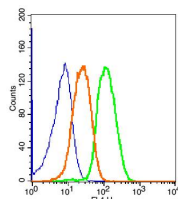
sales@bioss.com.cn

techsupport@bioss.com.cn

400-901-9800

**— DATASHEET —**

<b>Host:</b> Rabbit	<b>Isotype:</b> IgG	<b>Applications:</b> <b>Flow-Cyt</b> (1µg /Test) <b>ELISA</b> (1:5000-10000)
<b>Clonality:</b> Polyclonal		<b>Reactivity:</b> Human, Rabbit (predicted: Mouse, Rat, Pig, Cow, Chicken, Dog, GuineaPig, Horse)
<b>GeneID:</b> 5336	<b>SWISS:</b> P16885	<b>Predicted MW.:</b> 147 kDa
<b>Target:</b> PLCG 2 (Tyr1217)		<b>Subcellular Location:</b> Extracellular matrix ,Cell membrane ,Cytoplasm
<b>Immunogen:</b> KLH conjugated Synthesised phosphopeptide derived from human PLC gamma 2 around the phosphorylation site of Tyr1217: FL(p-Y)DT.		
<b>Purification:</b> affinity purified by Protein A		
<b>Concentration:</b> 1mg/ml		
<b>Storage:</b> 0.01M TBS (pH7.4) with 1% BSA, 0.02% Proclin300 and 50% Glycerol. Shipped at 4°C. Store at -20°C for one year. Avoid repeated freeze/thaw cycles.		
<b>Background:</b> Enzymes of the phospholipase C family catalyze the hydrolysis of phospholipids to yield diacylglycerols and water soluble phosphorylated derivatives of the lipid head groups. A number of these enzymes have specificity for phosphoinositides. Of the phosphoinositide specific phospholipase C enzymes, C beta is regulated by heterotrimeric G protein coupled receptors, while the closely related C gamma 1 and C gamma 2 enzymes are controlled by receptor tyrosine kinases. The C gamma 1 and C gamma 2 enzymes are composed of phospholipase domains that flank regions of homology to noncatalytic domains of the SRC oncogene product, SH2 and SH3.		

**— VALIDATION IMAGES —**

Blank control(blue): Hep G2 Cells(fixed with 2% paraformaldehyde (10 min) and then permeabilized with ice-cold 90% methanol for 30 min on ice) . Primary Antibody: Rabbit Anti-Phospho-PLCG 2 (Tyr1217)/AF647 Conjugated antibody (bs-3338R/AF647), Dilution: 1µg in 100 µL 1X PBS containing 0.5% BSA; Isotype Control Antibody: Rabbit IgG/AF647(orange) ,used under the same conditions.