

bs-19137R**[Primary Antibody]****ZFR Rabbit pAb****Bioss**
ANTIBODIES

www.bioss.com.cn

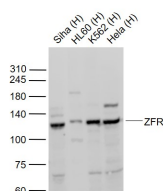
sales@bioss.com.cn

techsupport@bioss.com.cn

400-901-9800

— DATASHEET —

Host: Rabbit	Isotype: IgG	Applications: WB (1:500-2000)
Clonality: Polyclonal		Reactivity: Human (predicted: Mouse, Rat, Rabbit, Pig, Sheep, Cow, Dog, Horse)
GeneID: 51663	SWISS: Q96KR1	Predicted MW.: 117 kDa
Target: ZFR		Subcellular Location: Cytoplasm ,Nucleus
Immunogen: KLH conjugated synthetic peptide derived from human ZFR: 271-370/1074.		
Purification: affinity purified by Protein A		
Concentration: 1mg/ml		
Storage: 0.01M TBS (pH7.4) with 1% BSA, 0.02% Proclin300 and 50% Glycerol. Shipped at 4°C. Store at -20°C for one year. Avoid repeated freeze/thaw cycles.		
Background: ZFR is 1,074 amino acid RNA-binding protein. In human, ZFR is expressed in lung, liver, lymphocytes, heart, pancreas, kidney and placenta, and regulates postimplantation and gastrulation stages of development. Murine ZFR is observed in testis, ovary and brain. With elevated levels of expression during meiosis, ZFR associates with chromosome foci in meiotic cells. ZFR contains 1 DZF domain and localizes in the somatodendritic compartment of hippocampal neurons and colocalizes with STAU2 in cytosolic RNA granules. Knockout of ZFR in mouse embryo prevents the development of some embryonic structures leads to an increase in programmed cell death with a decrease in mitotic index.		

— VALIDATION IMAGES —

Sample: Lane 1: SiHa (Human) Cell Lysate at 30 ug
Lane 2: HL60 (Human) Cell Lysate at 30 ug
Lane 3: K562 (Human) Cell Lysate at 30 ug
Lane 4: Hela (Human) Cell Lysate at 30 ug
Primary: Anti-ZFR (bs-19137R) at 1/1000 dilution
Secondary: IRDye800CW Goat Anti-Rabbit IgG at 1/20000 dilution
Predicted band size: 117 kD
Observed band size: 117 kD