

**bs-7915R**

**[ Primary Antibody ]**

## MOBKL2C Rabbit pAb

**Bioss**  
ANTIBODIES

www.bioss.com.cn

sales@bioss.com.cn

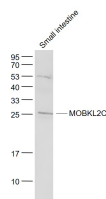
techsupport@bioss.com.cn

400-901-9800

### — DATASHEET —

<b>Host:</b> Rabbit	<b>Isotype:</b> IgG	<b>Applications:</b> WB (1:500-2000)
<b>Clonality:</b> Polyclonal		<b>Reactivity:</b> Mouse (predicted: Human, Rat, Rabbit, Pig, Cow, Chicken, Dog)
<b>GeneID:</b> 148932		
<b>Target:</b> MOBKL2C		<b>Predicted MW.:</b> 24 kDa
<b>Immunogen:</b> KLH conjugated synthetic peptide derived from human MOBKL2C: 31-110/216.		<b>Subcellular Location:</b> Cytoplasm
<b>Purification:</b> affinity purified by Protein A		
<b>Concentration:</b> 1mg/ml		
<b>Storage:</b> 0.01M TBS (pH7.4) with 1% BSA, 0.02% Proclin300 and 50% Glycerol. Shipped at 4°C. Store at -20°C for one year. Avoid repeated freeze/thaw cycles.		
<b>Background:</b> MOBKL2C is similar to the yeast Mob1 protein. Yeast Mob1 binds Mps1p, a protein kinase essential for spindle pole body duplication and mitotic checkpoint regulation. Alternatively spliced transcript variants encoding distinct isoforms have been observed.		

### — VALIDATION IMAGES —



Sample: Small intestine (Mouse) Lysate at 40 ug  
Primary: Anti- MOBKL2C (bs-7915R) at 1/1000  
dilution Secondary: IRDye800CW Goat Anti-  
Rabbit IgG at 1/20000 dilution Predicted band  
size: 24 kD Observed band size: 25 kD