

bs-1398R**[Primary Antibody]****Bioss**
ANTIBODIES

www.bioss.com.cn

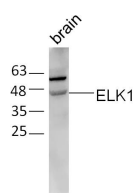
sales@bioss.com.cn

techsupport@bioss.com.cn

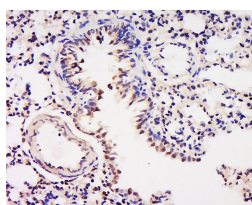
400-901-9800

ELK1 Rabbit pAb**— DATASHEET —**

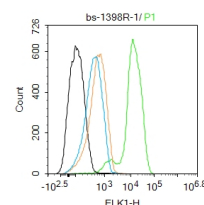
Host: Rabbit	Isotype: IgG	Applications: WB (1:500-2000) IHC-P (1:100-500) IHC-F (1:100-500) IF (1:100-500) Flow-Cyt (1ug/Test) Reactivity: Human, Mouse, Rat (predicted: Cow, Horse) Predicted MW.: 47 kDa Subcellular Location: Nucleus
Clonality: Polyclonal		
GeneID: 2002	SWISS: P19419	
Target: ELK1		
Immunogen: KLH conjugated synthetic peptide derived from human ELK1: 301-428/428.		
Purification: affinity purified by Protein A		
Concentration: 1mg/ml		
Storage: 0.01M TBS (pH7.4) with 1% BSA, 0.02% Proclin300 and 50% Glycerol. Shipped at 4°C. Store at -20°C for one year. Avoid repeated freeze/thaw cycles.		
Background: This gene is a member of the Ets family of transcription factors and of the ternary complex factor (TCF) subfamily. Proteins of the TCF subfamily form a ternary complex by binding to the the serum response factor and the serum response element in the promoter of the c-fos proto-oncogene. The protein encoded by this gene is a nuclear target for the ras-raf-MAPK signaling cascade. This gene produces multiple isoforms by using alternative translational start codons and by alternative splicing. Related pseudogenes have been identified on chromosomes 7 and 14. [provided by RefSeq, Mar 2012].		

— VALIDATION IMAGES —

Sample: Brain (Mouse) Lysate at 40 ug Primary:
Anti-ELK1 (bs-1398R) at 1/300 dilution
Secondary: IRDye800CW Goat Anti-Rabbit IgG at
1/20000 dilution Predicted band size: 47 kD
Observed band size: 47 kD



Tissue/cell: Rat lung tissue; 4%
Paraformaldehyde-fixed and paraffin-
embedded; Antigen retrieval: citrate buffer (0.01M, pH 6.0), Boiling bathing for 15min; Block
endogenous peroxidase by 3% Hydrogen
peroxide for 30min; Blocking buffer (normal goat
serum, C-0005) at 37°C for 20 min; Incubation:
Anti-ELK1 Polyclonal Antibody,
Unconjugated(bs-1398R) 1:200, overnight at 4°C,
followed by conjugation to the secondary
antibody(SP-0023) and DAB(C-0010) staining



Blank control:Hela. Primary Antibody (green
line): Rabbit Anti-ELK1 antibody (bs-1398R)
Dilution: 1ug/Test; Protocol The cells were fixed
with 4% PFA (10min at room temperature)and
then permeabilized with 90% ice-cold methanol
for 20 min at -20°C.The cells were then
incubated in 5%BSA to block non-specific
protein-protein interactions for 30 min at room
temperature .Cells stained with Primary
Antibody for 30 min at room
temperature.Acquisition of 20,000 events was
performed.