

**bs-3794R****[ Primary Antibody ]****ANO1/DOG1 Rabbit pAb****Bioss**  
**ANTIBODIES**

www.bioss.com.cn

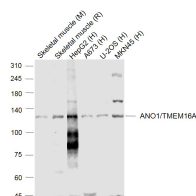
sales@bioss.com.cn

techsupport@bioss.com.cn

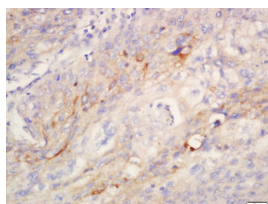
400-901-9800

**— DATASHEET —**

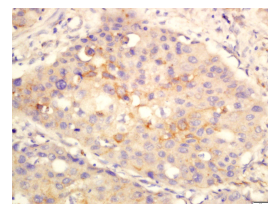
<b>Host:</b> Rabbit	<b>Isotype:</b> IgG	<b>Applications:</b> <b>WB</b> (1:500-2000)
<b>Clonality:</b> Polyclonal		<b>IHC-P</b> (1:100-500)
<b>GeneID:</b> 55107	<b>SWISS:</b> Q5XXA6	<b>IHC-F</b> (1:100-500)
<b>Target:</b> ANO1/DOG1		<b>IF</b> (1:100-500)
<b>Immunogen:</b> KLH conjugated synthetic peptide derived from human DOG-1/TMEM16A: 151-250/986.		<b>Reactivity:</b> Human, Mouse, Rat (predicted: Pig, Cow, Dog, Horse)
<b>Purification:</b> affinity purified by Protein A		
<b>Concentration:</b> 1mg/ml		<b>Predicted MW.:</b> 114 kDa
<b>Storage:</b> 0.01M TBS (pH7.4) with 1% BSA, 0.02% Proclin300 and 50% Glycerol. Shipped at 4°C. Store at -20°C for one year. Avoid repeated freeze/thaw cycles.		<b>Subcellular Location:</b> Cell membrane ,Cytoplasm
<b>Background:</b> TMEM16A (Transmembrane protein 16A) is an eight-transmembrane protein homologous to C12orf3, C11orf25 and FLJ34272 gene products and is amplified in various cancers. It acts as a calcium-activated chloride channel and is required for normal tracheal development.		

**— VALIDATION IMAGES —**

Sample: Lane 1: Skeletal muscle (Mouse) Lysate at 40 ug Lane 2: Skeletal muscle (Rat) Lysate at 40 ug Lane 3: HepG2 (Human) Cell Lysate at 30 ug Lane 4: A673 (Human) Cell Lysate at 30 ug Lane 5: U-2OS (Human) Cell Lysate at 30 ug Lane 6: MKN45 (Human) Cell Lysate at 30 ug Primary: Anti-ANO1/TMEM16A (bs-3794R) at 1/1000 dilution Secondary: IRDye800CW Goat Anti-Rabbit IgG at 1/20000 dilution Predicted band size: 114-120 kD Observed band size: 120 kD



Tissue/cell: human lung carcinoma; 4% Paraformaldehyde-fixed and paraffin-embedded; Antigen retrieval: citrate buffer (0.01M, pH 6.0), Boiling bathing for 15min; Block endogenous peroxidase by 3% Hydrogen peroxide for 30min; Blocking buffer (normal goat serum, C-0005) at 37°C for 20 min; Incubation: Anti-TMEM16A Polyclonal Antibody, Unconjugated(bs-3794R) 1:200, overnight at 4°C, followed by conjugation to the secondary antibody(SP-0023) and DAB(C-0010) staining



Tissue/cell: Human lung cancer tissue; 4% Paraformaldehyde-fixed and paraffin-embedded; Antigen retrieval: citrate buffer (0.01M, pH 6.0), Boiling bathing for 15min; Block endogenous peroxidase by 3% Hydrogen peroxide for 30min; Blocking buffer (normal goat serum, C-0005) at 37°C for 20 min; Incubation: Anti-TMEM16A Polyclonal Antibody, Unconjugated(bs-3794R) 1:200, overnight at 4°C, followed by conjugation to the secondary antibody(SP-0023) and DAB(C-0010) staining