

bs-3799R**[Primary Antibody]****KLK11 Rabbit pAb****BioSS**
ANTIBODIES

www.bioss.com.cn

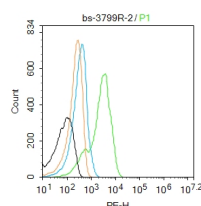
sales@bioss.com.cn

techsupport@bioss.com.cn

400-901-9800

— DATASHEET —

Host: Rabbit Clonality: Polyclonal GeneID: 11012 Target: KLK11 Immunogen: KLH conjugated synthetic peptide derived from human KLK11: 201-282/282. Purification: affinity purified by Protein A Concentration: 1mg/ml Storage: 0.01M TBS (pH7.4) with 1% BSA, 0.02% Proclin300 and 50% Glycerol. Shipped at 4°C. Store at -20°C for one year. Avoid repeated freeze/thaw cycles. Background: Kallikrein 11 has two alternative splicing isoforms, known as the brain type and prostate type. Elevated serum levels of hK11 have been found in 70% of women with ovarian cancer and in 60% of men with prostate cancer. Analysis of this biomarker in serum may aid in the diagnosis and monitoring of ovarian and prostatic carcinoma.	Isotype: IgG SWISS: Q9UBX7	Applications: Flow-Cyt (2ug/Test) Reactivity: Human (predicted: Mouse, Rat, Dog) Predicted MW.: 25 kDa Subcellular Location: Secreted ,Cytoplasm
---	---	---

— VALIDATION IMAGES —

Blank control:A431. Primary Antibody (green line): Rabbit Anti-KLK11 antibody (bs-3799R)
Dilution: 2µg /10⁶ cells; Isotype Control Antibody (orange line): Rabbit IgG . Secondary Antibody : Goat anti-rabbit IgG-PE Dilution: 1µg /test. Protocol The cells were fixed with 4% PFA (10min at room temperature)and then permeabilized with 0.1% PBST for 20 min at room temperature.The cells were then incubated in 5%BSA to block non-specific protein-protein interactions for 30 min at room temperature .Cells stained with Primary Antibody for 30 min at room temperature. The secondary antibody used for 40 min at room temperature. Acquisition of 20,000 events was performed.