

bs-3756R**[Primary Antibody]****PPP1CA Rabbit pAb****BioSS**
ANTIBODIES

www.bioss.com.cn

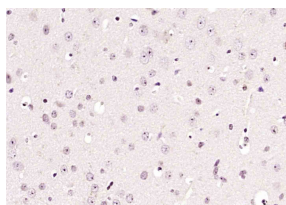
sales@bioss.com.cn

techsupport@bioss.com.cn

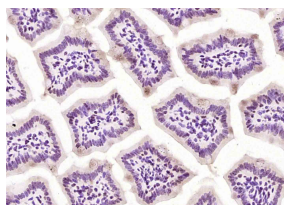
400-901-9800

— DATASHEET —

Host: Rabbit Clonality: Polyclonal GeneID: 5499 Target: PPP1CA Immunogen: KLH conjugated synthetic peptide derived from human PPP1CA: 281-382/382. Purification: affinity purified by Protein A Concentration: 1mg/ml Storage: 0.01M TBS (pH7.4) with 1% BSA, 0.02% Proclin300 and 50% Glycerol. Shipped at 4°C. Store at -20°C for one year. Avoid repeated freeze/thaw cycles. Background: PPP1A is a serine/threonine protein phosphatase catalytic subunit that is essential for regulating cellular stress responses in eukaryotes. It binds to magnesium or manganese ions and exists as a monomer. It is essential for cell division, and participates in the regulation of glycogen metabolism, muscle contractility and protein synthesis. PPP1A is involved in the regulation long term synaptic plasticity and may play an important role in dephosphorylating substrates such as Ca2+/calmodulin dependent protein kinase II.	Isotype: IgG SWISS: P62136	Applications: IHC-P (1:100-500) IHC-F (1:100-500) IF (1:100-500) Reactivity: Mouse (predicted: Human, Rat, Rabbit, Dog, Horse) Predicted MW.: 42 kDa Subcellular Location: Nucleus
---	---	---

— VALIDATION IMAGES —

Paraformaldehyde-fixed, paraffin embedded (mouse brain); Antigen retrieval by boiling in sodium citrate buffer (pH6.0) for 15min; Block endogenous peroxidase by 3% hydrogen peroxide for 20 minutes; Blocking buffer (normal goat serum) at 37°C for 30min; Antibody incubation with (PPP1A) Polyclonal Antibody, Unconjugated (bs-3756R) at 1:200 overnight at 4°C, followed by operating according to SP Kit(Rabbit) (sp-0023) instructions and DAB staining.



Paraformaldehyde-fixed, paraffin embedded (mouse intestine); Antigen retrieval by boiling in sodium citrate buffer (pH6.0) for 15min; Block endogenous peroxidase by 3% hydrogen peroxide for 20 minutes; Blocking buffer (normal goat serum) at 37°C for 30min; Antibody incubation with (PPP1A) Polyclonal Antibody, Unconjugated (bs-3756R) at 1:200 overnight at 4°C, followed by operating according to SP Kit(Rabbit) (sp-0023) instructions and DAB staining.