

bs-5080R**[Primary Antibody]****LASS6 Rabbit pAb****BioSS**
ANTIBODIES

www.bioss.com.cn

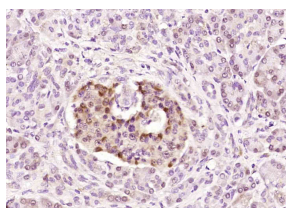
sales@bioss.com.cn

techsupport@bioss.com.cn

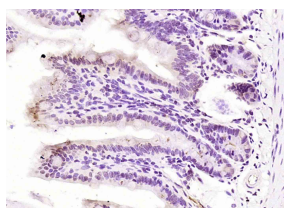
400-901-9800

— DATASHEET —

Host: Rabbit	Isotype: IgG	Applications: IHC-P (1:100-500)
Clonality: Polyclonal		IHC-F (1:100-500)
GeneID: 253782	SWISS: Q6ZMG9	IF (1:100-500)
Target: LASS6		Reactivity: Human, Mouse, Rat (predicted: Pig, Cow, Chicken, Dog, Horse)
Immunogen: KLH conjugated synthetic peptide derived from human LASS6: 31-130/384.		Predicted MW.: 45 kDa
Purification: affinity purified by Protein A		Subcellular Location: Cell membrane ,Cytoplasm ,Nucleus
Concentration: 1mg/ml		
Storage: 0.01M TBS (pH7.4) with 1% BSA, 0.02% Proclin300 and 50% Glycerol. Shipped at 4°C. Store at -20°C for one year. Avoid repeated freeze/thaw cycles.		
Background: The LASS (longevity-assurance homologue) family members, which are highly conserved among eukaryotes, function in ceramide synthesis. LASS6 (LAG1 homolog, ceramide synthase 6) may be involved in sphingolipid synthesis or its regulation.		

— VALIDATION IMAGES —

Paraformaldehyde-fixed, paraffin embedded (human pancreatic carcinoma); Antigen retrieval by boiling in sodium citrate buffer (pH6.0) for 15min; Block endogenous peroxidase by 3% hydrogen peroxide for 20 minutes; Blocking buffer (normal goat serum) at 37°C for 30min; Antibody incubation with (LASS6) Polyclonal Antibody, Unconjugated (bs-5080R) at 1:200 overnight at 4°C, followed by operating according to SP Kit(Rabbit) (sp-0023) instructions and DAB staining.



Paraformaldehyde-fixed, paraffin embedded (mouse intestine); Antigen retrieval by boiling in sodium citrate buffer (pH6.0) for 15min; Block endogenous peroxidase by 3% hydrogen peroxide for 20 minutes; Blocking buffer (normal goat serum) at 37°C for 30min; Antibody incubation with (LASS6) Polyclonal Antibody, Unconjugated (bs-5080R) at 1:200 overnight at 4°C, followed by operating according to SP Kit(Rabbit) (sp-0023) instructions and DAB staining.