

bs-3743R**[Primary Antibody]****phospho-Cytokeratin 8 (Ser23) Rabbit pAb****BioSS**
ANTIBODIES

www.bioss.com.cn

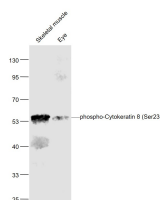
sales@bioss.com.cn

techsupport@bioss.com.cn

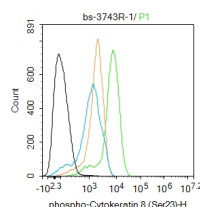
400-901-9800

— DATASHEET —

Host: Rabbit	Isotype: IgG	Applications: WB (1:500-2000) Flow-Cyt (1ug/Test)
Clonality: Polyclonal		
GeneID: 3856	SWISS: P05787	Reactivity: Human, Mouse (predicted: Rat)
Target: Cytokeratin 8 (Ser23)		
Immunogen: KLH conjugated synthesised phosphopeptide derived from human CK8 around the phosphorylation site of Ser23: SR(p-S)YT.		
Purification: affinity purified by Protein A		
Concentration: 1mg/ml		Predicted MW.: 53 kDa
Storage: 0.01M TBS (pH7.4) with 1% BSA, 0.02% Proclin300 and 50% Glycerol. Shipped at 4°C. Store at -20°C for one year. Avoid repeated freeze/thaw cycles.		Subcellular Location: Cytoplasm ,Nucleus
Background: This gene is a member of the type II keratin family clustered on the long arm of chromosome 12. Type I and type II keratins heteropolymerize to form intermediate-sized filaments in the cytoplasm of epithelial cells. The product of this gene typically dimerizes with keratin 18 to form an intermediate filament in simple single-layered epithelial cells. This protein plays a role in maintaining cellular structural integrity and also functions in signal transduction and cellular differentiation. Mutations in this gene cause cryptogenic cirrhosis. Alternatively spliced transcript variants have been found for this gene. [provided by RefSeq, Jan 2012].		

— VALIDATION IMAGES —

Sample: Skeletal muscle(Mouse) Lysate at 40 ug
 Eye(Mouse) Lysate at 40 ug Primary: Anti-phospho-Cytokeratin 8 (Ser23) (bs-3743R) at 1/1000 dilution Secondary: IRDye800CW Goat Anti-Rabbit IgG at 1/20000 dilution Predicted band size: 55 kD Observed band size: 55 kD



Blank control:MCF-7. Primary Antibody (green line): Rabbit Anti-phospho-Cytokeratin 8 (Ser23) antibody (bs-3743R) Dilution: 1ug/Test; Secondary Antibody : Goat anti-rabbit IgG-FITC Dilution: 0.5ug/Test. Protocol The cells were fixed with 4% PFA (10min at room temperature)and then permeabilized with 90% ice-cold methanol for 20 min at -20°C.The cells were then incubated in 5%BSA to block non-specific protein-protein interactions for 30 min at room temperature .Cells stained with Primary Antibody for 30 min at room temperature. The secondary antibody used for 40 min at room temperature. Acquisition of 20,000 events was performed.