

bs-22384R**[Primary Antibody]****AJAP1 Rabbit pAb****BioSS**
ANTIBODIES

www.bioss.com.cn

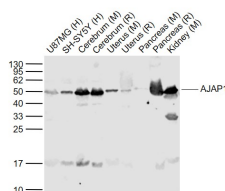
sales@bioss.com.cn

techsupport@bioss.com.cn

400-901-9800

— DATASHEET —

Host: Rabbit	Isotype: IgG	Applications: WB (1:500-2000)
Clonality: Polyclonal		Reactivity: Human, Mouse, Rat
GeneID: 55966	SWISS: Q9UKB5	
Target: AJAP1		
Immunogen: KLH conjugated synthetic peptide derived from human AJAP1: 271-370/411. < Cytoplasmic >		Predicted MW.: 46 kDa
Purification: affinity purified by Protein A		Subcellular Location: Cell membrane
Concentration: 1mg/ml		
Storage: 0.01M TBS (pH7.4) with 1% BSA, 0.02% Proclin300 and 50% Glycerol. Shipped at 4°C. Store at -20°C for one year. Avoid repeated freeze/thaw cycles.		
Background: AJAP1 (Adherens Junctions Associated Protein 1) is a Protein Coding gene. Diseases associated with AJAP1 include Dental Caries and Chromosome 1P36 Deletion Syndrome.		

— VALIDATION IMAGES —

Sample: Lane 1: U87MG (Human) Cell Lysate at 30 ug Lane 2: SH-SY5Y (Human) Cell Lysate at 30 ug Lane 3: Cerebrum (Mouse) Lysate at 40 ug Lane 4: Cerebrum (Rat) Lysate at 40 ug Lane 5: Uterus (Mouse) Lysate at 40 ug Lane 6: Uterus (Rat) Lysate at 40 ug Lane 7: Pancreas (Mouse) Lysate at 40 ug Lane 8: Pancreas (Rat) Lysate at 40 ug Lane 9: Kidney (Mouse) Lysate at 40 ug
 Primary: Anti-AJAP1 (bs-22384R) at 1/1000 dilution Secondary: IRDye800CW Goat Anti-Rabbit IgG at 1/20000 dilution Predicted band size: 50 kD Observed band size: 50 kD