

## SMEK1 Rabbit pAb

Catalog Number: bs-12636R

Target Protein: SMEK1

Concentration: 1mg/ml

Form: Liquid

Host: Rabbit

Clonality: Polyclonal

Isotype: IgG

Applications: WB (1:500-2000)

Reactivity: Human, Mouse, Rat

Predicted MW: 95 kDa

Subcellular Cytoplasm ,Nucleus

Locations:

Entrez Gene: 55671

Swiss Prot: Q6IN85

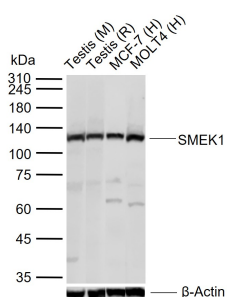
Source: KLH conjugated synthetic peptide derived from human SMEK1: 601-700/833.

Purification: affinity purified by Protein A

Storage: 0.01M TBS (pH7.4) with 1% BSA, 0.02% Proclin300 and 50% Glycerol.

Shipped at 4°C. Store at -20°C for one year. Avoid repeated freeze/thaw cycles.

## VALIDATION IMAGES



Sample: Lane 1: Mouse Testis tissue lysates Lane 2: Rat Testis tissue lysates Lane 3: Human MCF-7 cell lysates  
Lane 4: Human MOLT4 cell lysates Primary: Anti-SMEK1 (bs-12636R) at 1/1000 dilution Secondary:  
IRDye800CW Goat Anti-Rabbit IgG at 1/20000 dilution Predicted band size: 95 kDa Observed band size: 110  
kDa