

**bs-12634R****[ Primary Antibody ]****MIEF1 Rabbit pAb****BioSS**  
**ANTIBODIES**

www.bioss.com.cn

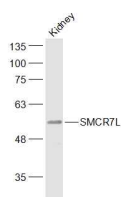
sales@bioss.com.cn

techsupport@bioss.com.cn

400-901-9800

**— DATASHEET —**

<b>Host:</b> Rabbit	<b>Isotype:</b> IgG	<b>Applications:</b> WB (1:500-2000)
<b>Clonality:</b> Polyclonal		
<b>GeneID:</b> 54471	<b>SWISS:</b> Q9NQG6	
<b>Target:</b> MIEF1		
<b>Immunogen:</b> KLH conjugated synthetic peptide derived from human MIEF1: 201-300/463.		
<b>Purification:</b> affinity purified by Protein A		<b>Reactivity:</b> Mouse (predicted: Human, Rat, Rabbit, Pig, Sheep, Cow, Zebrafish, Chicken, Horse)
<b>Concentration:</b> 1mg/ml		
<b>Storage:</b> 0.01M TBS (pH7.4) with 1% BSA, 0.02% Proclin300 and 50% Glycerol. Shipped at 4°C. Store at -20°C for one year. Avoid repeated freeze/thaw cycles.		
		<b>Predicted MW.:</b> 51 kDa
		<b>Subcellular Location:</b> Cell membrane

**— VALIDATION IMAGES —**

Sample: Kidney (Mouse) Lysate at 40 ug Primary:  
Anti-SMCR7L (bs-12634R) at 1/1000 dilution  
Secondary: IRDye800CW Goat Anti-Rabbit IgG at  
1/20000 dilution Predicted band size: 51 kD  
Observed band size: 51 kD

**— SELECTED CITATIONS —**

- **[IF=5.723]** Zhou H et al. NR4A1 aggravates the cardiac microvascular ischemia reperfusion injury through suppressing FUNDC1-mediated mitophagy and promoting Mff-required mitochondrial fission by CK2α. Basic Res Cardiol. 2018 May 9;113(4):23. WB ;Mouse. 29744594
- **[IF=5.039]** Kang L et al. The mitochondria - targeted anti - oxidant MitoQ protects against intervertebral disc degeneration by ameliorating mitochondrial dysfunction and redox imbalance. Cell Prolif. 2020 Feb 5:e12779. WB ;Human. 32020711
- **[IF=3.9]** Zuo Qiyong. et al. The Footprints of Mitochondrial Fission and Apoptosis in Fluoride-Induced Renal Dysfunction. BIOL TRACE ELEM RES. 2023 Dec;;1-11 IHC ;Mouse. 38057486