

bs-12789R**[Primary Antibody]****ZP1 Rabbit pAb****BioSS**
ANTIBODIES

www.bioss.com.cn

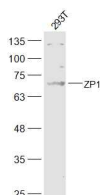
sales@bioss.com.cn

techsupport@bioss.com.cn

400-901-9800

— DATASHEET —

Host: Rabbit	Isotype: IgG	Applications: WB (1:500-2000)
Clonality: Polyclonal		
GeneID: 22917	SWISS: P60852	
Target: ZP1		
Immunogen: KLH conjugated synthetic peptide derived from human ZP1: 301-400/638.		
Purification: affinity purified by Protein A		Reactivity: Human (predicted: Mouse, Rat, Rabbit)
Concentration: 1mg/ml		Predicted MW.: 68 kDa
Storage: 0.01M TBS (pH7.4) with 1% BSA, 0.02% Proclin300 and 50% Glycerol. Shipped at 4°C. Store at -20°C for one year. Avoid repeated freeze/thaw cycles.		Subcellular Location: Secreted
Background: The zona pellucida is an extracellular matrix that surrounds the oocyte and early embryo. It is composed primarily of three or four glycoproteins with various functions during fertilization and preimplantation development. The protein encoded by this gene ensures the structural integrity of the zona pellucida. Mutations in this gene are a cause of oocyte maturation defect and infertility. [provided by RefSeq, May 2014]		

— VALIDATION IMAGES —

Sample: 293T(Human) Cell Lysate at 30 ug

Primary: Anti-ZP1 (bs-12789R) at 1/300 dilution

Secondary: IRDye800CW Goat Anti-Rabbit IgG at 1/20000 dilution Predicted band size: 68 kD

Observed band size: 68 kD