

**bs-23054R****[ Primary Antibody ]****PCDHAC2 Rabbit pAb****Bioss**  
**ANTIBODIES**

www.bioss.com.cn

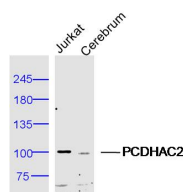
sales@bioss.com.cn

techsupport@bioss.com.cn

400-901-9800

**— DATASHEET —**

<b>Host:</b> Rabbit	<b>Isotype:</b> IgG	<b>Applications:</b> WB (1:500-2000)
<b>Clonality:</b> Polyclonal		
<b>GeneID:</b> 56134	<b>SWISS:</b> Q9Y5I4	
<b>Target:</b> PCDHAC2		
<b>Immunogen:</b> KLH conjugated synthetic peptide derived from human PCDHAC2: 201-300/1007.		
<b>Purification:</b> affinity purified by Protein A		<b>Reactivity:</b> Human, Mouse (predicted: Rat, Cow)
<b>Concentration:</b> 1mg/ml		<b>Predicted MW.:</b> 105 kDa
<b>Storage:</b> 0.01M TBS (pH7.4) with 1% BSA, 0.02% Proclin300 and 50% Glycerol. Shipped at 4°C. Store at -20°C for one year. Avoid repeated freeze/thaw cycles.		<b>Subcellular Location:</b> Cell membrane
<b>Background:</b> PCDHAC2 (Protocadherin alpha C2) is a member of the protocadherin family, a subgroup of the cadherin superfamily. Protocadherins are neural cadherin-like cell adhesion proteins that are integral membrane proteins. Their specific functions are unknown but they most likely play a critical role in the establishment and function of specific neuronal connections in the brain. PCDHAC2 is one of fifteen tandemly arranged genes within the alpha cluster of protocadherin genes on 5q31.		

**— VALIDATION IMAGES —**

Sample: Jurkat Cell (Human) Lysate at 40 ug  
Cerebrum (Mouse) Lysate at 40 ug Primary: Anti-PCDHAC2 (bs-23054R) at 1/300 dilution  
Secondary: IRDye800CW Goat Anti-Rabbit IgG at 1/20000 dilution Predicted band size: 105 kD  
Observed band size: 102 kD